

# TRAVEL CALUMET

W I S C O N S I N

## 2024 VISITORS GUIDE

Calumet County...  
**CLOSER**  
than you think

OUTDOOR RECREATION / SUPPER CLUBS / NORDIC CENTER

[www.travelcalumet.com](http://www.travelcalumet.com)





The history of AriensCo has been intertwined with the American landscape since 1893. The AriensCo Museum tells the story of this country's journey from horse and plow to horsepower, using vintage equipment, artifacts, and memorabilia to capture significant moments in America. Historic vignettes allow you to experience an 1890s factory, 1930s farm culture, and a 1960 backyard - all under one roof.

**Guided or self-guided tours for all groups and schools!**

Highlights include:

- 10 ft. Gear Wall
- Life-Sized Snow Globe
- Hands-On Exhibits
- STEM-Focused Displays

**FREE GENERAL  
ADMISSION**

To schedule a tour call (920) 756-5125 or online at [www.AriensCoMuseum.com/plan-your-visit/](http://www.AriensCoMuseum.com/plan-your-visit/)

**ARIENS | CO MUSEUM**

109 Calumet Street  
Brillion, Wis. 54110



**ARIENS  
NORDIC CENTER™**

- > Snowmaking and Lighted Trails
- > 5k Trail Network
- > Winter Fat Biking & Cross-Country Skiing
- > 20-Point Biathlon Range
- > FREE Walking and Running
- > Roller Skiing, Inline & Quad Skating
- > Season Passes & Daily Tickets Available
- > Rentals, Lessons, Races & Programming Offered

**LEARN MORE >  
ARIENSNORDIC.COM**

**OUTDOORS  
YEAR ROUND**

**Brillion**  
Small City.  
Big Heart.

Warm and Welcoming  
Brillion...A place  
to create truly  
memorable experiences.



**Brillion City Center**  
201 N. Main Street  
920-756-2250  
[www.brillionwi.gov](http://www.brillionwi.gov)



Scan the QR Code to take you to the  
Experience Brillion Website



# WELCOME TO Calumet County

High Cliff  
Marina



Are you looking for a quality of life providing quick access to dozens of direct flights all over the United States? That is the fastest growing area in Wisconsin and is conveniently located between two US Interstates? An area, literally, only a few minutes from Broadway theatrical productions and arguably, one of the most historic and successful professional sports franchises in the world? That is home to a different pace, friendly, hard-working people, and an abundance of hidden gems filled with outdoor recreational activities? Consider Calumet County.

Recreation in Calumet County is a unique blend of distinctive venues and old-world Wisconsin beauty and charm. The county delivers a more peaceful and relaxing experience than most alternatives. Travelling throughout the rolling hills, pristine waterways, and sweeping vistas, you quickly discover the 4-season color palette is an attraction unto itself. Whether

it's winter's whites, spring and summer's unique greens and blues, or the explosion of reds, browns, and yellows of Calumet County's autumns, a refreshing and relaxing experience is closer than you think.

In addition to colors, one of the leading components defining the Calumet County experience is outdoor recreation. Whether biking or hiking through the Niagara Escarpment; dropping anchor to enjoy great fishing or bask in the beauty of an amazing sunset on Lake Winnebago, (Wisconsin's largest inland lake), the entirety of the county offers great year-round opportunities.

A recent world-class addition to the recreational landscape of Calumet County is Ariens Nordic Center. Inspired by the Ariens brand's sponsorship of the [U.S. Biathlon Team](#), the center, open to the public, includes 5 kilometers of lighted trails for cross-country skiing designed by internationally acclaimed Morton

Trails. It also is home to a state-of-the-art pioneering 20-point Kurvinen Biathlon Target System. Additionally, the center includes a robust snowmaking system covering all trails, a 3k paved roller ski loop, a 10-million-gallon pond for snowmaking, and so much more.

Another impressive Calumet County recreational venue is High Cliff State Park. Named for a limestone cliff of the Niagara Escarpment, High Cliff is fixed on Lake Winnebago's northeastern shore. Boating, sailing, year-round fishing, and swimming opportunities are as abundant as the trails for hiking, biking, horseback riding, cross country skiing, snowshoeing, and snowmobiling. And if you want your getaway to be overnight, bring your camper! Additionally, within the park area are both shaded and exposed cliff habitats and talus slopes supporting wet-mesic forest. Outstanding examples of conical and effigy mounds are located

above the escarpment as well as a 40-foot observation tower offering a breathtakingly spectacular view of Lake Winnebago and its surrounding landscape.

If wildlife, fishing, and hunting are your preferred recreational activities, the Kiel Marsh Wildlife Area offers more than 800 acres of experiences. A scenic, less than 20-minute drive from Kiel Marsh, leads to the Killsnake Wildlife Area where 7,000 acres of outdoor adventure awaits. And if adventure is what you truly crave, look no further than Ledge View Nature Center for an immersive (and an extreme clothes-dirtying) experience in the caves.

And what is the best way to end a fun-filled day of Calumet County recreation? How about the fine dining experience of an area supper club; a unique recreational experience all its own. Calumet County is the Supper Club Capital of the Midwest® and like fingerprints, each unique supper club is a one-

of-a-kind place to gather with friends, share a meal, and live an experience.

A simpler pace, an exceptional quality of life while only minutes away from robust industry and strong economic performance isn't out of reach. In fact, they aren't that far away...Calumet County... Closer Than You Think!

To learn more about Calumet County, visit [travelcalumet.com](http://travelcalumet.com) and make sure to sign-up for the Travel Calumet Newsletter and download episodes of the Travel Calumet Original Podcast.

Follow Travel Calumet on our social media platforms for the latest updates and events in the county.



To learn more about Calumet County, visit [travelcalumet.com](http://travelcalumet.com)!

## TABLE OF CONTENTS

Attractions.....	4-8
Dining .....	9-11
Retail.....	13-17
Map.....	18-19
Calendar of Events.....	20-24
Lodging.....	25
Arts & Culture.....	26-30
Parks & Recreation.....	32-35
Directory .....	36

The **Calumet County Visitors Guide** is published and produced annually by Calumet County and Zander Press Inc.

©2024 Zander Press Inc.

TRAVEL  
**CALUMET**  
WISCONSIN

206 Court Street | Chilton, WI 53014  
920-849-1680  
[info@travelcalumet.com](mailto:info@travelcalumet.com) | [travelcalumet.com](http://travelcalumet.com)

 **Zander Press Inc.**

425 W. Ryan Street | Brillion, WI 54110  
920-756-2222 | [zanderpressinc.com](http://zanderpressinc.com)



# Attractions



Mulberry Lane Farm



Heritage Orchard



Polly's Pumpkin Patch

## FARM FUN

### EVERGREEN VALLEY FISH FARM

W1551 County Road E, Chilton  
(920)849-4488 or (920)464-0375

Everyone catches a fish here! Reel in a perch or bluegill from one of the three man-made ponds on the farm. No fishing license needed. Open by appointment only.

### HERITAGE ORCHARD

N2963 Lake Shore Drive, Chilton  
(920)849-2158

[heritageorchardwi.com](http://heritageorchardwi.com)

With Lake Winnebago as a backdrop, this orchard and its country store is a must-see in fall. Sixteen varieties of apples are available pre-picked or pick your own. Don't forget about the pumpkins, apple baked goods, award-winning cider, apple cider donuts, and crafters loft too!

### KIDFARM.LLC

N3425 Harlow Rd | Chilton  
(920)517-3440

From creating award-winning goat cheese to offering hands-on experiences like goat yoga, Larry and Clara Hedrich have enjoyed sharing their passion for goats with families for over 40 years. Come visit the farm and check out live milking demonstrations, see our unique chicken breeds, and cuddle with adorable baby goats! Stop by our on-site farm store and pick up expansive goat milk products like soaps, lotions, and more. Tours by appointment only. Please call us for more information and farm updates.

### MULBERRY LANE FARM

W3190 County Road B, Hilbert  
(920)989-3130

[mulberrylanefarmwi.com](http://mulberrylanefarmwi.com)  
See our ad on page 5.

An interactive farm experience where people of all ages can play with and pet farm animals such as

pigs, cows, goats, sheep, chickens, bunnies, and kittens. A visit also includes milking a cow and a tractor drawn hayride. In spring, there are baby farm animals including kids, lambs, bunnies, chicks, calves, etc. Enjoy the cool breezes the country affords you during our summer season. In fall, everyone visits the Pumpkin Patch to pick a free pumpkin. Bring a picnic lunch to enjoy in the massive haymow or in the outdoor picnic area. Open May 1-Oct. 31. (Check calendar for hours of operation.)

### POLLY'S PUMPKIN PATCH

N4367 Hwy 57, Chilton  
(920)849-4819

[pollyspumpkinpatch.com](http://pollyspumpkinpatch.com)

Pick strawberries in summer and then come back in fall to pick out that perfect pumpkin! Polly's grows thousands of pumpkins each year that are different colors and shapes. No two pumpkins are the same! There are more than just pumpkins at Polly's. Be sure to test your skills at the 15-acre corn maze and activity area or enjoy a hayride out to the pumpkin patch. The Farm Market features local foods, fresh-baked pies, apple cider donuts, and homemade canned goods.

## RECREATION

### ARIENS NORDIC CENTER

1111 Round Lake Road, Brillion  
(920)756-5494 | [ariensnordic.com](http://ariensnordic.com)  
See our ad on page 1.

A new year-round course of adventure awaits at Ariens Nordic Center including 5K of lighted trails for cross-country skiing, a state-of-the-art 20-point Kurvinen Biathlon Target System, a robust snowmaking system, a 3k paved roller ski loop, and more!

### BRILLION COMMUNITY CENTER POOL AND SPLASH PAD

120 Center Street, Brillion  
(920)756-3216  
[ci.brillion.wi.us/pool](http://ci.brillion.wi.us/pool)

Swim and splash year-round at this indoor pool and splash pad. Visit website for open swim times. Admission rates do apply.

### FARM COUNTRY ATV PARK

Hacker Road, Brillion  
(920)756-3216

[ci.brillion.wi.us/atv-park](http://ci.brillion.wi.us/atv-park)

A 37-acre adventure park with trails that are open to ATVs and UTVs. Noise restrictions are strictly enforced. Open May - November (weather dependent) 9am-6pm. City of Brillion permit required.

### GRAVITY PARK USA

W2571 Hickory Hills Road, Chilton  
(920)849-RACE (7223)

[gravityparkusa.com](http://gravityparkusa.com)

Gravity Park USA explodes as one of the Midwest's most premiere extreme race facilities! Boasting

world-class quad, motocross and stock car dirt tracks, Gravity Park USA competes with the biggest and baddest in the racing industry. Races are held spring through fall with free spectator admission for most motocross, and quad events. Admission fees do apply for stock car races. Racers love our reserved parking spaces, shower facilities, camper parking, and the chance to kick back and relax with fans after the race. Check the website for race dates and times.

### HIGH CLIFF STATE PARK

N7630 State Park Road, Sherwood  
(920)989-1106

[dnr.wi.gov/topic/parks/name/high-cliff/](http://dnr.wi.gov/topic/parks/name/high-cliff/)

A small swimming area on Lake Winnebago that is located just beyond the park entrance. No life-guards are provided. The bathhouse has flush toilets, showers, changing areas and open shelters. A vehicle admission sticker is required.

### NEW HOLSTEIN AQUATIC CENTER

1718 Madison Street, New Holstein  
(920)898-1373 summer,  
(920)898-5766 off-season  
[cityofnewholstein.org](http://cityofnewholstein.org)  
See our ad on page 5.

An outdoor, zero-depth/beach-entry designed aquatic center that features: runout slides, floor fountain jet play areas, interactive play features, a child's slide, a diving board, a drop slide, a whirl cove, two lap lanes, and a sand play area. The bathhouse includes men's and women's restroom/changing areas, a handicap restroom/family changing room, a concession room, a rentable party/meeting room, and storage areas.

### SHERWOOD SPLASH PAD AT WANICK CHOUTE PARK

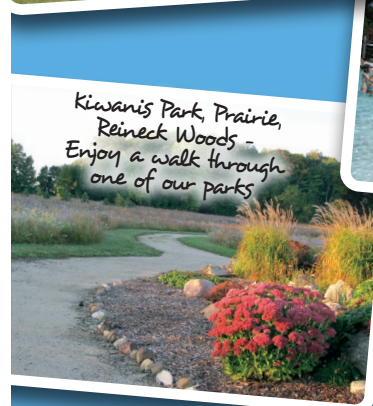
W4690 Castle Drive, Sherwood  
(920)989-1589

[villageofsherwood.org](http://villageofsherwood.org)

Parents and kids of all ages agree that this state-of-the-art outdoor splash pad is a must-do in the sum-

## Discover New Holstein

Make memories with your family and friends  
while enjoying all that New Holstein has to offer.



2110 Washington Street, New Holstein  
For more information on these or other activities in  
New Holstein visit us online at  
[www.cityofnewholstein.org](http://www.cityofnewholstein.org)  
or call 920-898-5766.



## Touch the wonders of Mulberry Lane Petting Farm



ADMIT ONE FREE  
With 2 Paid  
General Admissions

- Catch a Chicken
- Milk a Cow
- Kiss a Pig
- Cuddle a Kitten
- Enjoy a Hayride
- Snacks & Beverages
- and More!

Limit one FREE per coupon.  
Expires September 8, 2024.  
Not valid with any other offers.  
Can not be duplicated.  
Original coupon only. Void if  
reproduced or phone shot.

W3190 County Rd. B (3 miles east of Sherwood)

FOR 2024 DATES & RATES  
920-989-3130 [www.MulberryLaneFarmWI.com](http://www.MulberryLaneFarmWI.com)



# Attractions CONTINUED



mer. The splash pad is located near High Cliff State Park and is free to use. Changing rooms are available. A visit to the large, adjacent playground is sure to make this one unforgettable day!

## CAVES LEDGE VIEW NATURE CENTER

W2348 Short Road, Chilton  
(920)849-1471

[ledgeviewnaturecenter.org](http://ledgeviewnaturecenter.org)

Carolyn's Caverns is a walk-through cave with the excitement of optional crawl passages. Bring a flashlight to explore the awesome underground world during the two-hour tour. Throughout the tour the naturalist will point out unique features and maybe a cave critter or two!

Mothers Cave is for the most adventurous! It involves plenty of belly crawling, with a ceiling height from 11 inches to a whopping 24 inches. This keeps a visitor down and dirty until the exit, a wiggle through the challenging "Squeeze." A little bit of rock climbing then brings the green world of the forest into view.

A cave tour is offered most weekends from May through October, and many weekdays in summer. Call (920)849-1471 or visit our website for tour dates/times and reservations. It's a cool place to be on a hot day!

## SWEET TREATS AMISH BLISS

307 E. Main Street, Chilton  
(920)815-1209

[facebook.com/AmishBlissChocolates](https://facebook.com/AmishBlissChocolates)

We offer a superior selection of freshly made bakery, candy, dry soups and mixes, and quality jarred goods. All products are carefully prepared by the local Amish community with quality ingredients. The delight of their guests is their priority.

## FROGG'S ICE CREAM

N370 Military Road, Sherwood  
(920)749-1672, [froggsic.com](http://froggsic.com)

Easy to find on Hwy 114 in Sherwood, close to High Cliff State Park and Mulberry Lane Farm, this ice cream shop specializes in soft serve. Frogg's offers the three basics (vanilla, chocolate and twist) but can turn them into delicious masterpieces of yumminess! Specialty

creations include their "Frogg-in-a-Blender" treats. Open April-Labor Day. Cash only.

## SCOOPS ICE CREAM HOUSE

131 E. Chestnut Street, Chilton  
(920)849-2520

[scoopsicecreamhouse.com](http://scoopsicecreamhouse.com)

See our ad on page 7.

Scoops Ice Cream House is open year-round and located in the middle of Calumet County. What makes this place so special is that all of the ice cream is hand-made in small batches. Flavors include the always available Sweet 16 plus 8 more seasonal flavors. Enjoy your treat outside at a table, on a vintage truck, or use their convenient drive-thru. Also offering Terra Verde Coffee and specialty drinks.

## TOASTY OVEN BAKE SHOPPE

W2360 Kiel Road, New Holstein  
(920)894-1776

Nestled in New Holstein's drumlin-covered countryside, this small Amish bakery is waiting to greet you with its amazing smells and delicious goods. Sip on free coffee while deciding what to buy.

From turnovers to donuts, pies to breads, and other items like canned goods, homemade noodles, and dog treats, a tough decision awaits! Open Friday (9am-6pm) and Saturday (7am-4pm). Cash only.

## OTHER VENUES

A few more places that offer hand-dipped ice cream include Henning's Cheese in Kiel, Calumet County Park near Stockbridge, Vern's Cheese in Chilton and Mohnen's Family Restaurant in Harrison.

## SPIRITS

### ROWLAND'S CALUMET BREWING COMPANY

25 N. Madison Street, Chilton  
(920)849-2534

[rowlandsbrewery.com](http://rowlandsbrewery.com)

See our ad on page 21.

Rowland's has been brewing since 1990. The brewery makes over 35 flavors a year, including seasonal beer and specialty beers with a total of 11 beers on tap at any time. Rowland's also produces draft root



beer. The bar/brewery is housed in an 1870 building that once served as Chilton's City Hall and the city's first fire station. Visit our website for hours of operations and additional information.

## ENTERTAINMENT CHILTON CINEMA

26 N. Madison Street, Chilton

(920)849-9565 | [getreelcinemas.com](http://getreelcinemas.com)

Calumet County's nostalgic cinema. The Chilton Cinema is a first run movie theater with most movies shown within a month of their release. Rumor has it that Houdini used the stage's trap door in his magic act.

### A Course for All Seasons!

**9 Holes \$13, with cart \$20**  
Friday Fish Fry — Daily Specials  
Serving Food Daily 11am - 8pm  
Open Year Round

**NEW Mini Golf Course!**  
FREE Winter Sledding, Cross Country Skiing, Ice Skating & Snowmobile Trail to Clubhouse, 4th of July Fireworks

912 Fairway Drive, Brillion • 875-0544 • See Us On Facebook

**Small Batch & Handmade**

- National award winning ice cream.
- Open Year Round
- Ice Cream Handcrafted In House
- Sweet 16 favorite flavors plus 8 seasonal flavors
- Custom Ice Cream cakes
- Drive-Thru opens at 10am daily
- Offering lattes, cappuccinos, mochas, and chai lattes

131 E. Chestnut St.  
Chilton, WI 53014  
[www.scoopsicecreamhouse.com](http://www.scoopsicecreamhouse.com)



# Attractions CONTINUED

## CHILTON TWILIGHT DRIVE-IN THEATER

1255 E. Chestnut Street, Chilton  
(920)883-7275 | [getreelcinemas.com](http://getreelcinemas.com)  
What was once a big box retailer is now an outdoor movie theater. Bring chairs and blankets and sit outside next to your car and enjoy a double feature under the stars. A full concession stand is available that offers homemade pizza delivery to your vehicle. Movies start at dark.

## OFFICIAL'S BOWL & SPIRITS

408 N. 8th Street, Hilbert,  
(920)871-4023 | [officialsdenbowl.com](http://officialsdenbowl.com)  
Official's bowling alley is an 8-lane family entertainment center that opens daily at 11am. Enjoy the full menu and interact with the friendly staff, as very reasonable prices make for a great experience. Call for bowling times.

## PLA-MOR LANES

300 E. Main Street, Chilton  
(920)849-2131 | [pla-morlanes.com](http://pla-morlanes.com)  
Pla-Mor Lanes is your local family entertainment center. We pride ourselves on a clean, fun,

and enjoyable environment. Pla-Mor Lanes is an eight-lane center, with a full kitchen and bar attached. Check out the website for group rates, menu items, and much more!

## SPLIT HAPPENS LANES

106 S. Main Street, Brillion  
(920)756-2790  
A fun, little six-lane bowling alley located on Brillion's Main Street. Pizzas available! Call for open bowling times.

## STRIKE ZONE

2106 Wisconsin Avenue, New Holstein  
(920)827-2202  
We are a 12-lane bowling alley with five pool tables and fantastic homemade stone oven pizza. In addition to being a great place for families, we are also a fantastic place to watch the big game.

## WINTER FUN

### ARIENS NORDIC CENTER

1111 Round Lake Road, Brillion  
(920)756-5494 | [ariensnordic.com](http://ariensnordic.com)  
*See our ad on page 1.*  
A new year-round course of adventure awaits at Ariens Nordic Center including 5K of lighted trails for cross-country skiing, a state-of-the-

art 20-point Kurvinen Biathlon Target System, a robust snowmaking system, a 3k paved roller ski loop, and more!

## BRAUN'S DEER RUN GOLF COURSE & RESTAURANT

912 Fairway Drive, Brillion  
(920)875-0544  
*See our ad on page 7.*  
When the summer golf & mini golf season is over and snow has fallen, enjoy a variety of winter activities for free, weather permitting. Activities include sledding, cross-country skiing, snowshoeing, and ice-skating. Bring your own equipment. Open daily from 8am-10pm.

## CALUMET COUNTY PARK

N6150 County Road EE  
Hilbert (north of Stockbridge)  
(920)439-1008  
[calumetcountyparks.org](http://calumetcountyparks.org)  
When there is adequate snow, the snow tube hill is the place to be! Carry-in tubes are not permitted on the tube hill but can be used on the adjacent sledding hill. Please visit our website for tube hill hours and information. Check out our cross-country ski trails and winter fat tire mountain bike trails!

## THE NORTH POLE CHRISTMAS VILLAGE

N5207 Lemke Road, Chilton  
(920)216-4705  
[thenorthpolechristmasvillage.com](http://thenorthpolechristmasvillage.com)  
A free magical holiday experience awaits at Northern WI's largest indoor animated walk-thru experience! Many Christmas scenes inside and outside, and don't forget to stop by the concession area for a Christmas cookie and milk. Pictures with Santa are available. Visit their website for hours of operation.

# Supper Club Capital OF THE MIDWEST®

## Schwarz's Supper Club



A supper club is a dining experience like no other that includes a whole lot of food for not too much money. Your experience starts at the bar where the most popular drink ordered is the Old Fashioned. A typical meal may include a relish tray, bread, soup, salad, an entrée and ice cream drinks for dessert. Meant to be an experience, dinner could take a couple of hours, especially during the weekend. The Calumet County region has 16 supper clubs to choose from and is the Supper Club Capital of the Midwest®.

## THE ALTONA SUPPER CLUB

2306 Calumet Drive, New Holstein  
(920)898-5255  
[altonasupperclub.com](http://altonasupperclub.com)

## BLANCK'S SUPPER CLUB

W2655 County Road Q, Malone  
(920)795-4484 | [blanckssupperclub.com](http://blanckssupperclub.com)

## CEDAR LODGE

N10872 Highway 151, Malone  
(920)795-4574 | [thecedarlodge.com](http://thecedarlodge.com)

## COBBLESTONE CREEK DINING & BANQUET

740 W. Ryan Street, Brillion  
(920)756-3214 | [cobblestonecrk.com](http://cobblestonecrk.com)  
*See our ad on page 12.*

## GEORGE'S STEAKHOUSE

2208 S. Memorial Drive, Appleton  
(920)733-4939  
[georgessteakhouseappleton.net](http://georgessteakhouseappleton.net)

## GOBBLER'S KNOB SUPPER CLUB

101 N. Military Road, Stockbridge  
(920)439-1265 | [gobblersknob.net](http://gobblersknob.net)

## THE GRANARY SUPPER CLUB

N586 Military Road, Sherwood  
(920)989-1233  
[granarysupperclub.com](http://granarysupperclub.com)

## JIM & LINDA'S LAKEVIEW SUPPER CLUB

W3496 CTH W, Malone  
(920)795-4116 | [jimandlindas.net](http://jimandlindas.net)

## KOEHRING'S GRAND CENTRAL HOUSE

602 Fremont Street, Kiel  
(920)894-7630 | [koehrings.com](http://koehrings.com)

## MICHIELS BAR & GRILL

1100 Appleton Road, Menasha  
(920)722-7885 | [michielsbarandgrill.com](http://michielsbarandgrill.com)

## MILLHOME SUPPER CLUB

16524 Lax Chapel Road, Kiel  
(920)894-7414  
[millhomesupperclub.com](http://millhomesupperclub.com)

## THE RED OX SEAFOOD & STEAKHOUSE

2318 S. Oneida Street, Appleton  
(920)830-4121  
[redoxseafoodandsteakhouse.com](http://redoxseafoodandsteakhouse.com)

## ROEPKE'S VILLAGE INN

W2686 St. Charles Road, Chilton (Charlesburg), (920)849-4000  
[roepkesvillageinn.com](http://roepkesvillageinn.com)  
*See our ad on 12.*

## SCHMITZ BROTHERS 2

58 S. 8th Street, Hilbert | (920)853-3015

## SCHWARZ'S SUPPER CLUB

W1688 Sheboygan Road  
New Holstein (St. Anna)  
(920)894-3598 | [schwarzsupperclub.com](http://schwarzsupperclub.com)

## VAN ABEL'S OF HOLLANDTOWN

8108 CTH D, Kaukauna  
(920)766-2291 | [vanabels.com](http://vanabels.com)

## Braun's Deer Run Mini Golf





APPLETON	A & W	(920) 993-9999	3801 E. Calumet Street	Fast Food
	Arby's	(920) 735-6513	3709 E. Calumet Street	Fast Food
	Big Apple Bagels	(920) 733-3120	2400 S. Kensington Drive	Bakery/Café
	Buffalo Wild Wings	(920) 733-9464	3201 E. Calumet Street	Bar/Grill
	China Garden	(920) 380-0058	4055 E. Calumet Street	Chinese
	Christianos Pizza	(920) 364-9108	2400 S. Kensington Drive	Pizzeria
	Culver's	(920) 733-7700	3631 E. Calumet Street	Fast Food
	Dairy Queen	(920) 738-6109	2000 S. Oneida Street	Fast Food
	Fat Sammy's Bar & Grill	(920) 730-0535	2500 S. Oneida Street	Bar/Grill
	Firehouse Subs	(920) 574-3358	3845 E. Calumet Street	Fast Food
	Little Caesar's	(920) 731-2222	317 E. Calumet Street	Pizza
	Maple Tree Restaurant and Pancake House	(920) 358-7397	2106 S. Oneida Street	Casual
	McDonald's	(920) 739-0501	2001 S. Kensington Drive	Fast Food
	Noodles and Company	(920) 830-7887	3719 E. Calumet Street	Casual
	Papa John's	(920) 993-7272	4055 E. Calumet Street	Pizza
	Pizza King	(920) 731-3234	1717 E. Calumet Street	Pizza/Sandwiches
	Qdoba Mexican Grill	(920) 968-0077	3813 E. Calumet Street	Fast Food
	Red Ox Seafood & Steakhouse, The	(920) 830-4121	2318 S. Oneida Street	Supper Club
	Study Hall Grille & Pub	(920) 733-3309	313 E. Calumet Street	Bar/Grill
	Subway	(920) 738-0524	3701 E. Calumet Street	Fast Food
	Subway	(920) 380-4750	4055 E. Calumet Street	Fast Food
	T. J. Thai Sushi and Japanese Steakhouse	(920) 831-8330	4025 E. Lorna Lane	Japanese & Hibachi
	Tom's Drive In	(920) 739-1649	3301 E. Calumet Street	Fast Food
	Wendy's	(920) 202-3890	3300 S. Oneida Street	Fast Food
BRILLION	Batch Baker Co.	(920) 973-4160	115 Jackson Street	Bakery/Coffee
	Braun's Deer Run Golf Course & Restaurant	(920) 875-0544	912 Fairway Drive	Bar/Grill
	Cobblestone Creek	(920) 756-3214	740 W. Ryan Street (Highway 10)	Supper Club/Banquet
	DQ Grill & Chill	(920) 756-3737	521 N. Glenview Avenue	Fast Food
	Ethel's Pub & Grill	(920) 524-2169	300 N. Main Street	Bar/Grill
	Gloria's Cantina & Mexican Grill	(920) 524-2288	418 W. Ryan Street (Highway 10)	Mexican
	Hunan Chinese	(920) 756-2656	116 S. Main Street	Chinese
	KOR	(920) 524-2400	422 W. Ryan Street	Nutrition Club
	Marko's Smokin' BBQ	(920) 851-0903	910 W. Ryan Street	Bar/Grill/Casual
	McDonald's	(920) 756-2001	570 W. Ryan Street (Highway 10)	Fast Food
	Rudy's Cafe	(920) 756-2755	117 W. Ryan Street (Highway 10)	Casual
	Subway	(920) 756-5315	438 W. Ryan Street (Highway 10)	Fast Food
	7 Angels Restaurant	(920) 849-2125	128 E. Chestnut Street (Highway 57)	Casual
CHILTON	40 West	(920) 418-1158	40 W. Main Street (Highway 151)	Bar/Pizza
	Cheers	(920) 849-3058	26 N. State Street	Bar/Grill
	Curve Inn	(920) 849-2086	249 E. Main Street	Bar/Grill
	DQ Grill & Chill	(920) 849-9379	621 N. Madison Street (Highway 57)	Fast Food
	Eagles Club	(920) 849-9223	1041 E. Chestnut Street (Highway 57)	Casual/Banquet
	Ethel's Pub and Grill	(920) 849-4949	100 W. Main Street (Highway 151)	Bar/Grill
	Fast Taco by Lupita's Mexican Store	(920) 849-3039	503 N. Madison Street (Highway 57)	Mexican
	Fishermans Inn	(920) 849-2460	N2197 Highway 151	Bar/Grill
	Herradura Mexican Restaurant & Cantina	(920) 483-0556	613 Calumet Street	Mexican
	Hickory Hills Country Club	(920) 849-2912	W3095 Hickory Hills Road	Bar/Grill
	Hilde's Deli and Bakery	(920) 849-4005	24 W. Main Street (Highway 151)	Deli/Hot Food
	King Wok	(920) 849-2044	1106 E. Chesnut Street (Highway 57)	Chinese
	McDonald's	(920) 849-7383	1123 E. Chestnut Street (Highway 57)	Fast Food
	Neighborhood Pub and Grill	(920) 849-3799	N5091 County Highway BB	Bar/Grill
	Oasis Bar and Grill at Lakeview RV Park & Cabins	(920) 439-1495	N4475 Ledge Road	Bar/Grill
	Opy's Pizzeria	(920) 464-1170	42 W. Main Street	Pizza
	Pla-Mor Lanes	(920) 849-2131	300 E. Main Street	Bowling Alley/Grill/Bar
	Quinney Quencher	(920) 439-1341	W5626 Quinney Road	Bar/Grill
	Roepke's Village Inn	(920) 849-4000	W2686 St. Charles Road	Supper Club
	Scoops Ice Cream House	(920) 849-2520	131 E. Chestnut Street (Highway 57)	Ice Cream
	Subway	(920) 849-4851	810 S. Irish Road	Fast Food
	Terra Verde Coffeehouse	(920) 849-9050	507 N. Madison Street (Highway 57)	Coffee/Café
	FOREST JCT. Railroad Junction Restaurant	(920) 989-3150	N8914 State Highway 57	Casual
HARRISON	Cimarron Bar and Grill	(920) 733-3125	W7170 State Highway 57	Casual
	Countryside Bar and Grill	(920) 989-1155	W5302 State Road 114	Bar/Grill
	Fireside Café (inside Christ the Rock Church)	(920) 840-6800	W6254 US-10 & 114	Coffee/Café
	Lake Park Pub	(920) 739-1901	W8904 Lake Park Road	Bar/Grill
	Mohnen's Darboy Family Restaurant	(920) 832-8770	W5669 County Road KK	Casual
	Mr. Brews Taphouse	(920) 815-3260	N9695 County N	Casual
	Salt	(920) 949-4223	N9650 Friendship Drive	Fine Dining
	Waverly Beach Bar & Grille	(920) 733-9721	N8770 Firelane 1	Bar/Grill

HILBERT	57 Saloon & Grill	(920) 853-3053	205 S. 8th Street (Highway 57)	Bar/Grill
	Hub on Main, The	(920) 483-0556	511 W. Main Street	Nutrition Club
	La Familia Mexican Grill & Bar	(920) 871-4084	107 S. 8th Street (Highway 57)	Mexican
	Little Caesar's Express	(920) 853-3974	51 S. 8th Street (Highway 57)	Fast Food
	Local Lounge, The	(920) 239-6961	245 W. Main Street	Bar/Grill
	Official's Bowl & Spirits	(920) 871-4023	408 N. 8th Street (Highway 57)	Bowling Alley/Grill
	Schmitz Brothers 2	(920) 853-3015	58 S. 8th Street (Highway 57)	Supper Club
	T's Diner	(920) 853-3225	N6403 State Highway 57	Casual
	Village Hearthstone	(920) 853-3013	326 W. Main Street	Casual
	KAUKAUNA Two of a Kind	(920) 766-7106	W3220 Dundas Road	Bar/Grill
KIEL	Café on Calumet	(920) 286-6444	911 Calumet St. (Highway 57)	Casual
MENASHA	Fork & Dagger Ale House, The	(920) 286-6500	901 Fremont Street	Casual
	El Jariepo	(920) 903-8529	890 Lake Park Road	Mexican
NEW HOLSTEIN	Stone Toad Bar & Grill	(920) 882-3900	1109 South Oneida Street	Bar/Grill/Banquet
	Altona Supper Club, The	(920) 898-5255	2306 Calumet Drive (Highway 57)	Supper Club
	Dilly's Seven Corners Bar & Restaurant	(920) 898-4702	W505 Fur Farm Road	Bar/Grill
	Isaac's Sports Bar & Grill	(920) 898-9030	2122 Wisconsin Avenue (Highway 57)	Bar/Grill
	King's Korner	(920) 898-1999	2000 Main Street	Bar/Grill
	Korner Kitchen	(920) 898-1842	1305 Milwaukee Drive (Highway 57)	Casual
	Schwarz's Supper Club	(920) 894-3598	W1688 Sheboygan Road	Supper Club
	Strike Zone	(920) 827-2202	2106 Wisconsin Avenue (Highway 57)	Bowling Alley/Grill
	Subway	(920) 898-1344	2305 Calumet Drive (Highway 57)	Fast Food
	Twisted Tap	(920) 898-5600	2001 Calumet Drive (Highway 57)	Bar/Pizza
	POTTER Gene and Helen's Bar	(920) 853-3804	375 Main Street	Bar/Grill
	3 Putt Pub at High Cliff Golf Course	(920) 989-1045	W5095 Golf Course Road	Bar/Grill
SHERWOOD	Bistro by the Park	(920) 989-0194	N7721 State Park Road	Ice Cream/Coffee/Café
	Frogg's Ice Cream	(920) 749-1672	N370 Military Road (Highway 114)	Ice Cream
	Granary Supper Club, The	(920) 989-1233	N586 Military Road	Supper Club
	Jeanne's Bar & Grill	(920) 989-2470	N302 Military Road (Highway 114)	Bar/Grill
	Mud Creek Coffee	(920) 439-1098	W571 Castle Drive	Coffee/Café
	One Fourteen Bar & Grill	(920) 507-0124	N7475 Highway 114	Bar/Grill
	Outpost Pub & Provisions, The	(920) 989-3300	N606 Knight Drive	Bar/Grill
	ROK	(920) 396-1029	N398 Military Road (Highway 114)	Teas/Shakes/Soups
	Subway	(920) 989-1995	W471 Veterans Ave.	Fast Food
	STOCKBRIDGE FishTail Inn Bar & Grill	(920) 439-1565	W5636 County Road EE (Hilbert)	Bar/Grill
	Gobbler's Knob Supper Club	(920) 439-1265	101 N. Military Road (Highway 55)	Supper Club
	Harbor Bar & Grill	(920) 981-4039	1919 W. Lake Street	Bar/Grill
	Kazzmo's Kitchen & Spirits	(920) 981-4028	105 N. Military Road (Highway 55)	Bar/Grill
	Mud Creek Coffee	(920) 439-1096	106 S. Military Road (Highway 55)	Coffee/Café
	Schumacher's Shanty	(920) 439-1232	101 S. Military Road (Highway 55)	Bar/Pizzeria



### Travel Calumet Original Podcast

Apple Podcasts  
Spotify  
Google Podcasts  
Amazon Music  
iHeartRadio



[www.travelcalumet.com/533/Podcasts](http://www.travelcalumet.com/533/Podcasts)

### TRAVEL CALUMET WISCONSIN



Calumet County...  
Closer Than You Think



Subscribe to our newsletter! Use the QR code or go to  
[www.travelcalumet.com/532/Newsletters](http://www.travelcalumet.com/532/Newsletters)



**W3953 Winnebago Heights Rd. | Malone, WI  
(920) 670-0034 | [www.zieglerwinery.com](http://www.zieglerwinery.com)**

Located within the Wisconsin Ledge AVA, all wines are handcrafted with 100% of the process done on site. Our large tasting room offers 2 upper levels, 2 fireplaces, an outdoor enclosed patio, and a stage area for bands. We also offer beer and food items.



Cobblestone Creek





**QUALITY COFFEE  
SPECIALTY DRINKS  
DELICIOUS FOOD  
GREAT WINE SELECTION  
WARM AMBIENCE  
FRIENDLY SERVICE**

**MUDCREEKCOFFEE.COM**

**TWO LOCATIONS TO SERVE YOU**

106 S. Military Rd, (Highway 55)  
Stockbridge, WI 53088  
920-439-1096

W571 Castle Drive (Castle Square)  
Sherwood, WI 54169  
920-439-1098

Mon-Fri 6:30am - 3:00pm  
Sat 7:00am - 3:00pm  
Sun 8:00am - 1:30pm

Mon-Fri 6:00am - 3:00pm  
Sat 7:00am - 3:00pm  
Sun 8:00am - 2:00pm




- Certified Organic Direct Trade Coffee
- Fresh roasted coffees from around the world
- Wholesale & Retail available
- Best Cappuccinos, Lattes, Mochas, Chai, Hot Chocolates, & Specialty Drinks in town
- Non-caffeinated alternatives
- All day breakfast, lunch, & light dinners
- Daily soups made from scratch
- Fresh made bakery crafted in house
- Gift ideas

When you choose Terra Verde, you choose a social and environmentally responsible company. We strive to bring culture and social enrichment to our community with our relentless support of the arts and social organizations.



**Order Online at TerraVerdeCoffee.com**

507 N. Madison St. Chilton WI  
920-849-9050  
Free wifi



*Check out our Friday Night Fish Fry*

**A Great place for friends and family to meet...**

**Seafood  
Handcut Choice Steaks  
Salad Bar  
Desserts**

**W2686 St. Charles Rd.  
Charlesburg  
Chilton • 920-849-4000**

Hours: Daily 4:00-9:00 p.m.  
Closed Mondays

**www.roepkesvillageinn.com**

**Family Owned and Operated Since 1968**




740 W. Ryan Street  
Brillion  
920-756-3214  
[www.cobblestonecrk.com](http://www.cobblestonecrk.com)



**SEAFOOD, STEAKS, PASTA ENTREES AND ALL YOU CAN EAT DAILY FEATURES. CASUAL DINING OPEN THURSDAY THROUGH SUNDAY. DELICIOUS FOOD, WARM HOSPITALITY AND FRIENDLY SERVICE, ALWAYS AT COBBLESTONE CREEK**

**Lunch and Dinner, Weddings, Banquets & Catering**

Thurs. 11:00 - 1:30 PM and 4:30 PM - close  
Friday: 11:00 - 1:30 PM and 4:00 PM - close  
Saturday: 4:30 PM - close  
Sunday 9:00 - 1:00 PM and 4:00 - 8:00 PM  
Banquet space to host groups of any size, up to 500

# Retail

## DIRECTORY

Antique	Furniture
Artisan	Gift
Cheese	Hardware
Clothing	Meat
Floral	

# Brave Girl BOUTIQUE

**HOURS**

tuesday	10 am - 4 pm
wednesday	10 am - 4 pm
thursday	10 am - 5 pm
friday	10 am - 4 pm
saturday	10 am - 3 pm

**LOCATED AT**  
106 S Military Rd  
Stockbridge, WI 53088  
(920) 439-0977

Facebook: Brave Girl Boutique  
[bravegirlboutique1@gmail.com](mailto:bravegirlboutique1@gmail.com)  
[www.bravegirlboutique.com](http://www.bravegirlboutique.com)

Unique, locally owned shops are scattered across the countryside within the many charming communities of Calumet County. Since these shops are small, hours vary, and some are only open seasonally. Please call ahead or visit their websites for hours of operation.



**BRAVE GIRL BOUTIQUE**  
106 S. Military Road, Stockbridge  
(920)439-0977  
[facebook.com/bravegirlboutique](https://facebook.com/bravegirlboutique)  
See our ad on page 13.

Unique, inclusive, on-trend women's clothing. Our sizes range from small to 3X providing something fun for everyone. In addition, we offer a nice selection of gift items, great accessories and shoes.



**ARIENSCO MUSEUM RETAIL STORE**  
109 Calumet Street, Brillion  
(920)756-4455  
[ariensco.com/history/museum](http://ariensco.com/history/museum)  
See our ad on page 15.

Gifts, books, décor, puzzles, bags, and gear uniquely focused on themes within the AriensCo Museum, including reproductions of historic graphics from company archives. Casual clothing items including sweatshirts, t-shirts, jackets, and caps. Children's books, toys, and games that feature engineering, nature, and weather topics. Wisconsin-themed merchandise. Natural skincare products and candles. Local honey and beeswax products. Open weekdays 8-4. Check website for extended summer hours.



**BRILLION BUTCHER SHOP**  
640 W. Ryan Street, Brillion  
(920)756-2400  
[brillionbutchershop.com](http://brillionbutchershop.com)

At Brillion Butcher Shop we take pride in providing fresh quality meats to our community. Our aim is to keep the local butchery trade alive while offering a new and ever-changing line of products to our customers. We offer a variety of sausage, smoked meats, cheeses, spices, and deli items — many that are unique only to our store!



**BRILLION BLOOMS**  
562 W. Ryan Street, Brillion  
(920)756-3939 | [brilliontblooms.com](http://brilliontblooms.com)  
Brillion Blooms is a locally-owned florist featuring fresh cut flowers,

green plants as well as gifts and décor that changes with the season. The business specializes in weddings, memorials, and celebrating life's every day moments. Check us out on Facebook and Instagram.



**HENNING'S WISCONSIN CHEESE**  
20201 Point Creek Road, Kiel  
(920)894-3032  
[henningscheese.com](http://henningscheese.com)  
See our ad on page 14.

Whether you're looking for a specialty cheese, a block of the finest cheddar, or a 12,000 lb. mammoth wheel, you've come to the right place. Henning's Wisconsin Cheese is a fourth generation family-owned cheese factory based in rural Kiel that features an on-site cheese store and museum. Henning's offers a wide variety of cheese, including cheddars and colbys that have won many national and world awards. You can watch cheese being made and try fresh cheese curds every morning Monday through Friday. Hours: Monday-Friday 7am-4pm; Saturday 8am-Noon; Closed Sundays.



# Retail CONTINUED



## HIDDEN HOLLOW GARDEN ART

(open select dates)

**N1851 Orchard Road, New Holstein**  
[hiddenhollowgardenart.com](http://hiddenhollowgardenart.com)

Hidden Hollow Garden Art is proudly imagined and created (by hand) in a magical place nestled in rural Wisconsin. Our creations start as crazy ideas, which we turn into something our cutting table can understand, then we cut, bend, weld, assemble, bend, and weld some more — and that's step one! We love to mix it up combining the amazing patina of rust with fun pops of color. All of our pieces are created to withstand Wisconsin weather so you may enjoy for many seasons to come.



## HIGH CLIFF STUDIO

**N398 Military Road, Sherwood**  
[www.highcliffstudio.com](http://www.highcliffstudio.com)

Specializing in functional pottery, each piece is wheel thrown, glazed, and fired. From coffee and bourbon mugs, baking dishes, soap dispensers, planters, and much more, every single piece is custom and unlike any other. The gallery is open by appointment.



## HONEYMOON ACRES

**2800 Ford Drive, New Holstein**  
**(920)898-4490**  
[honeymoonacres.com](http://honeymoonacres.com)

"A gardener's paradise". We specialize in great plants at great prices.

People have told us that we have a wide variety of plants and products that they just love. In spring, we have greenhouses of vegetables, herbs, perennials, and annuals along with roses, trees, shrubs, fruits, and much more. In fall, we have pumpkins and hardy garden mums. In winter, we have poinsettias, wreaths, Christmas trees, and other wintery decor. Every season has something to offer, so come on out and explore!



## JUST FOR YOU FLOWERS & GIFTS

**1108 E. Chestnut Street, Chilton**  
**(920)849-9521**  
[justforyouflowerswi.com](http://justforyouflowerswi.com)

Flower and gift shop featuring silk

arrangements as well as fresh flowers and green plants. Full service for all occasions, including weddings, funerals, and special orders. We carry a unique line of home decor.



## KREATIVE KNOTTS

**210 N. Main Street, Brillion**  
**(920)464-2221 | [kreativeknotts.com](http://kreativeknotts.com)**

Inside you'll find vintage treasures, funny & unique cards & gifts, clothing, award winning Floppy Ear Farm goat milk products, jewelry, and our specialty...lots and lots of handmade wood signs!



## LACLARE FAMILY CREAMERY

**W2994 County Road HH, Malone**  
**(920)670-0051**

[laclarefamilycreamery.com](http://laclarefamilycreamery.com)

See our ad on page 16.

LaClare Family Creamery is one of the most awarded goat cheese producers in the country. Our Cheese Shoppe

offers a wide variety of our Wisconsin made LaClare Family Creamery and Saxon Creamery cheeses. We also offer ice cream, wine, and specialty foods or stop in our café for a delicious Pannini, delectable salad or bowl of soup.



## LILYBEE FLOWERS INC.

**2126 Wisconsin Avenue**  
**New Holstein, (920)898-5660**  
[lilybeeflowersinc.com](http://lilybeeflowersinc.com)

Lilybee Flowers Inc. is a full service floral design shop with gifts and wine located in charming New Holstein, Wisconsin.



## SCHROTH FLOWER MILL

**119 S. Main Street, Brillion**  
**(920)756-2921**

[www.schrothbrillionfloral.com](http://www.schrothbrillionfloral.com)

Schroth Flower Mill has been proudly serving Brillion and the surrounding areas since 1969. We offer only the finest floral arrangements and gifts,

backed by service that is friendly and prompt. Choose from our endless selection of home decor, candles, figurines, holiday gifts, garden decor, memorial items, and fresh Amy's Gourmet caramel apples.



## SEASONS BY DESIGN AND JILLAYNE'S BOUTIQUE

**102 Southside Shopping Center, Chilton | (920)849-8499**

[seasonsbydesignandboutique.com](http://seasonsbydesignandboutique.com)

The area's leading gift shop and boutique serving Chilton and surrounding areas since 2005. We offer home decor, apparel, graduation gifts, wedding gifts, baby gifts, sports apparel, seasonal and holiday gifts, garden decor, wine gifts,

**Come and see how we make great cheese!**



Visit our Store, Museum & Factory

- Watch us make cheese M-F mornings
- Browse our museum at no charge
- Variety of cheese, sausage, wine, ice cream souvenirs & more
- Fresh cheese curds M-F



20201 Point Creek Road | Kiel, WI 53042 | 920-894-3032

[www.henningscheese.com](http://www.henningscheese.com)

Follow us on Facebook.

Store Hours:

Mon. through Fri. 7 am – 4 pm, Sat. 8 am – Noon, Closed Major Holidays



**Woldt's FARM STORE**  
**EAT FRESH. EAT LOCAL.**



**N9594 CTY RD PP**  
**BRILLION, WI 54110**  
**(920) 864-7737**

**HOURS:**  
 TUESDAY: 1:00PM-5:30PM  
 THURSDAY: 1:00PM-5:30PM  
 FRIDAY: 9:00AM - 2:00PM  
 SATURDAY: 9:00AM - 2:00PM

FIND US ON



<https://www.woldtfarms.com/farm-store>

# ARIENSCO MUSEUM RETAIL STORE

OPEN 8:00-4:00 M-F | 109 CALUMET STREET | BRILLION, WI

## A UNIQUELY CURATED SELECTION

- Gifts, décor, book, puzzles, bags.
- Local honey and beeswax products.
- Reproductions of historic graphics from company archives.
- Casual clothing including sweatshirts, t-shirts, jackets and caps.
- Children's books, toys and games focused on engineering, nature, and weather topics.
- Wisconsin-themed merchandise.
- Natural skincare products and candles.





# Retail CONTINUED

jewelry, gift wrapping, and much more! Shop our large selection of unique specialty gifts for every reason and every season!



## SWEET SUMMERTIME ANTIQUES & MORE

(SEASONAL)  
125 N. Military Road, Stockbridge  
(920)439-1899

Open seasonally, this delightful shop is an eclectic combination of antiques, crafts, and gift items.



## VERN'S CHEESE

312 W. Main Street, Chilton  
(920)849-7717, [vernscheese.com](http://vernscheese.com)  
See our ad on page 17.

Come in and visit our Specialty Shoppe. Purchase any of our large

variety of Wisconsin specialty and artisan cheeses, gift boxes, meats, or snack and specialty items. We have a variety of Wisconsin souvenirs as well as Green Bay Packers and Wisconsin Badgers souvenirs. Serving our community with pride since 1964, our friendly staff will assist you with any questions you may have. Hours: Monday-Friday 8am-5:30pm; Saturday 8:30am-2pm; Closed Sundays.



## WAY BOUTIQUE

212 S Main St, Brillion  
[wayboutiqueinc.com](http://wayboutiqueinc.com)

Way Boutique is a well styled fashion boutique with an emphasis on versatility. Our clothing is here to make you feel way confident & beautiful! We believe versatility and

comfort are a must when it comes to clothing. Being able to wear clothes more than one way is important. It is our mission to provide outfit inspiration to make deciding what to wear way easier!



## WILD CHICORY

100 N. Military Road, Stockbridge  
(920)252-1653  
[facebook.com/Wild-Chicory-575696166132111](https://facebook.com/Wild-Chicory-575696166132111)

A fabulous store filled with new and reclaimed furniture, farmhouse style tables, decor, and beautiful things for a beautiful life.



## WOLDT'S FARM STORE

N9594 County Road PP, Brillion  
(920) 864-7737

[www.woldtfarms.com/farm-store](http://www.woldtfarms.com/farm-store)  
See our ad on page 14.

In May 2022, the Woldt Family opened Woldt's Farm Store to sell their own beef raised on the farm, as well as other local products. At the store you will not only find their own different cuts of beef, but also other locally grown specialty

meats, local cheeses, maple syrup, honey, candles, goat milk products, sauces, house plants, and other fun products.



## YE OLD GOAT

1919 E. Calumet Street, Appleton  
(920)243-4014, [yeoldgoat.com](http://yeoldgoat.com)

Ye Old Goat is a one of a kind modern-day market with a similar set up to that of an old school antique mall. Our market is filled with over

75 small business owners offering new, repurposed, vintage, and old items ready to take on that next chapter in their lives. So, if you're tired of the same old - same old, or are struggling to find that one piece to fit into that one particular place (we all know that one place) in your home, get ready for a refreshing shopping experience!



# VISIT LACLARE!

CHEESE TASTING • CAFE  
RETAIL STORE • VISITOR CENTER  
MONTHLY EVENTS • GOATS

Our creamery is Wisconsin's home for premier goat cheeses.

Today, we have reached new heights as a one-of-a-kind family destination.



**LACLARE**  
CREAMERY®

W2994 County Rd HH | Pipe, WI | Southeast side of Lake Winnebago  
Please check our website for current hours  
[laclarefamilycreamery.com](http://laclarefamilycreamery.com)



## Stop in our retail store today!

We offer a tremendous selection and small-town Wisconsin charm.

- The best Wisconsin cheeses
- Gourmet, local and specialty foods
- Wisconsin wines
- Craft beers with build-your-own six-pack option
- Locally made frozen pizzas

## Visit Us Today!



**Hours:**  
Monday-Friday 9 a.m. to 5:00 p.m.  
Saturday 8:30 a.m. to 2 p.m. Closed on Sundays.  
Vern's Cheese, Inc. ■ 312 W Main St. ■ Chilton, Wisconsin

Order online, anytime, with daily FedEx shipping: [vernscheese.com](http://vernscheese.com)



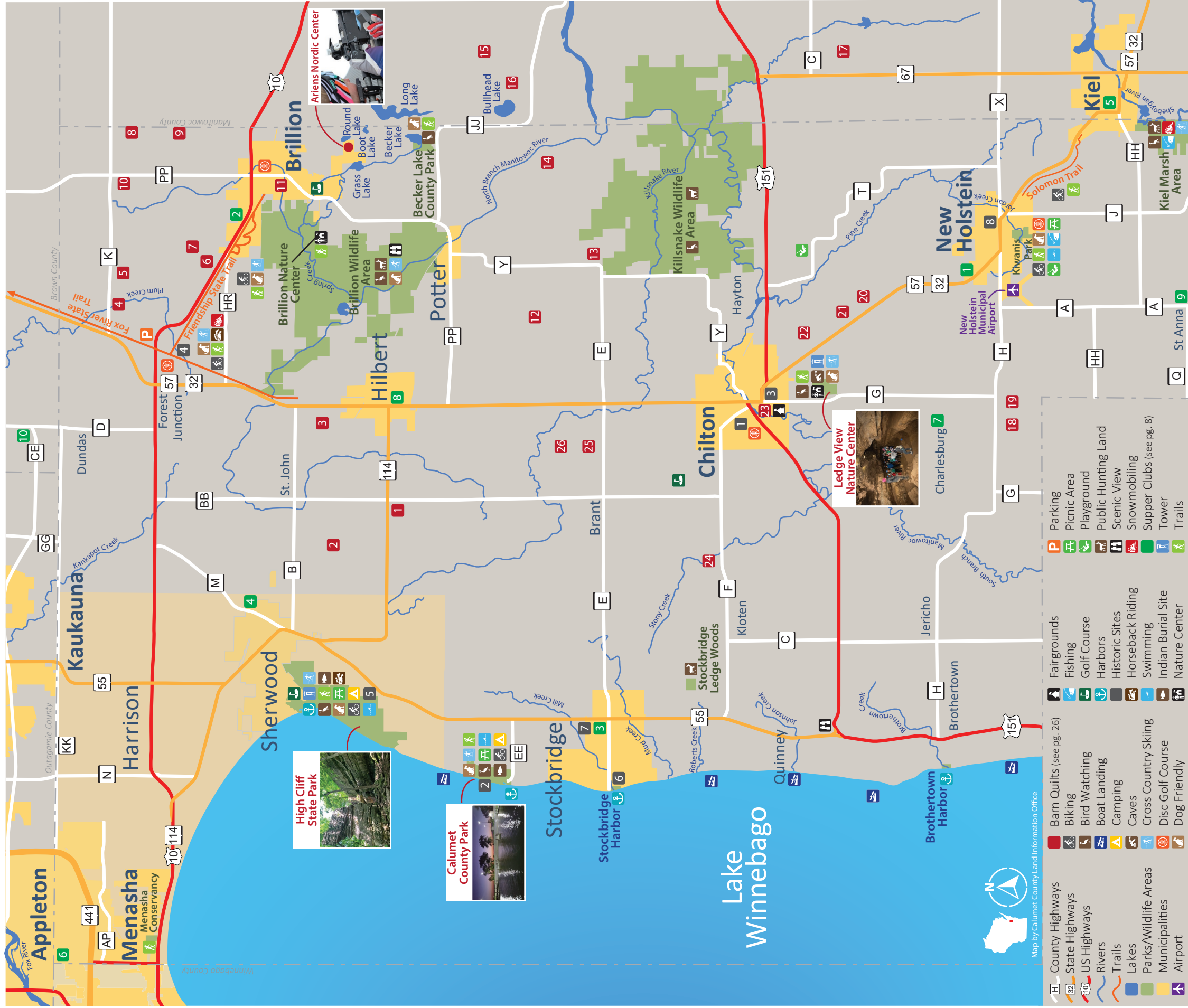
**Hidden Treasures**  
Thrift Shoppe

920-524-2000  
361 S. Main Street, Brillion, WI 54110  
Hours: Mon-Wed 10am - 5pm  
Sat 9am - Noon  
[www.hiddentreasuresbrillion.org](http://www.hiddentreasuresbrillion.org)





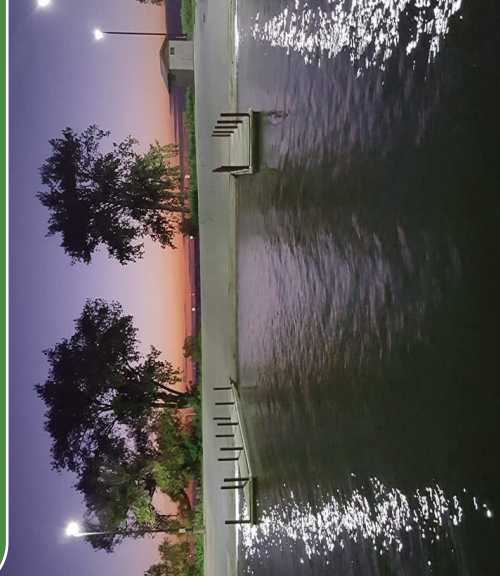
# Calumet County Map



Ariens Nordic Center



Calumet County Park



**proud producers and  
printers of the calumet  
county visitors guide**

Commercial Offset, Digital  
& Wide Format Printing  
Graphic Design & Websites

425 W. Ryan St. | Brillion, WI 54110

**920-756-2222**

*Zander Press Inc.*  
**www.zanderpressinc.com**



# Calendar of Events

## JANUARY

**Sunday, January 7**  
**Biathlon Race & Ski Equipment Demo Day**  
Ariens Nordic Center  
Go to [ariensnordic.com](#) for details.

**Thursday, January 11**  
**JLohr Wine Dinner**  
Round Lake Farms at Ariens Nordic Center, 6-8PM  
Go to [ariensnordic.com](#) for details.

**Saturday – Sunday, January 13 – January 14**  
**Ski Like a Girl Weekend Retreat**  
Ariens Nordic Center  
Go to [ariensnordic.com](#) for details.

**Sunday, January 14**  
**University of Wisconsin Green Bay Ski Day presented by Nicolet Bank**  
Ariens Nordic Center  
Go to [ariensnordic.com](#) for details.

**Saturday – Sunday, January 20 – January 21**  
**Ariens King of Snow Festival**  
Ariens Nordic Center  
Go to [ariensnordic.com](#) for details.

**Saturday – Sunday, January 20 – January 21**  
**Free Fishing Weekend**  
Wisconsin Department of Natural Resources  
You can wet a line without a fishing license, trout stamp, or salmon stamp. What a great opportunity for family & friends to give it a try! Look below for details to plan your special fishing day for your club or community group. [dnr.wisconsin.gov/topic/Fishing/anglereducation/freeFishingWeekend](#)

**Friday – Sunday, January 26 – January 28**  
**Ariens Nordic Invitational (CCSA NCAA Qualifier)**  
Ariens Nordic Center  
Go to [ariensnordic.com](#) for details.

## FEBRUARY

**Saturday – Sunday February 3 - February 4**  
**Wisconsin State Sprints**  
Ariens Nordic Center  
Go to [ariensnordic.com](#) for details.

**Thursday, February 8**  
**Wine Dinner**  
Round Lake Farms at Ariens Nordic Center, 6-8PM  
Go to [ariensnordic.com](#) for details.

**Saturday, February 10 – Sunday, February 25**  
**Sturgeon Spearing Season**  
Lake Winnebago, 7:00am-1:00pm  
Registration 7:00am-2:00pm  
Head out to several registration stations along the lake to see these giant prehistoric fish.

**Saturday, February 10**  
**Kid Day at Ariens Nordic Center**  
Ariens Nordic Center  
Go to [ariensnordic.com](#) for details.

**Sunday, February 11**  
**Fat Bike Biathlon Race**  
Ariens Nordic Center  
Go to [ariensnordic.com](#) for details.

**Wednesday, February 14**  
**Valentine's Dinner**  
Round Lake Farms at Ariens Nordic Center  
Go to [ariensnordic.com](#) for details.

**Friday, February 16**  
**Specialty Old Fashioned Class**  
Round Lake Farms at Ariens Nordic Center, 6:30-8:30pm  
Go to [ariensnordic.com](#) for details.

**Friday, February 16**  
**Night at the Museum Fundraiser**  
AriensCo Museum Brillion, 4 - 7 pm  
No kids are allowed—but you can still act like one! Unplug & play with our interactive exhibits exploring science, mechanical design, & technological innovations! This event is a fundraiser for Brillion Area Family of Funds (BAFF). \$60 per adult

**Sunday, February 18**  
**SnoMan Triathlon (Ski, Fat Bike, Biathlon)**  
Ariens Nordic Center  
Go to [ariensnordic.com](#) for details.

**Saturday, February 24**  
**Winter Sprinter 5K Snowshoe Walk/Run**  
Brillion Nature Center, Brillion 9:00am-11:00am  
Whether you are an experienced snowshoer with your own equipment or renting Brillion Nature Center's snowshoes for the first time, enjoy moving at your own pace as you snowshoe through the Brillion Wildlife Area. For more information, call 920-756-3591 or email [louie@brillionnaturecenter.net](mailto:louie@brillionnaturecenter.net)

## MARCH

**Friday, March 8**  
**Comedy Night**  
Round Lake Farms at Ariens Nordic Center, 6:30-10pm  
Go to [ariensnordic.com](#) for details.

**Saturday, March 9**  
**Open Barn on the Farm**  
Sattler Farm Lamb, W3167 CTH F, Chilton, 10am-2pm  
Take a walk through the barn & get your picture taken with little lambs. After your walk, stop at the house for samples of some lamb dishes.

**Saturday – Sunday, March 9 – March 10**  
**Biathlon Regionals**  
Ariens Nordic Center  
Go to [ariensnordic.com](#) for details.

**Sunday, March 10**  
**FFA Alumni Toy & Craft Show**  
**New Holstein High School, New Holstein, 9:00am-3:00pm**  
Enjoy the wide array of toys & crafts including tractors, trains, horses & many collector's items for purchase or trade. The event also includes kiddie tractor pull, silent auction & lunch. \$3 admission, ages 8 & younger free.

**Friday – Sunday, March 15 – March 17**  
**St. Patrick's Pot of Gold Weekend**  
Ariens Nordic Center  
Go to [ariensnordic.com](#) for details.

**Saturday, March 16**  
**Maple Syrup Camp**  
Brillion Nature Center  
Brillion, 10:00am-2:00pm  
Come to the BNC sugarbush to observe on-going maple tree tapping demonstrations, participate in collecting sap, learn some of the old & modern methods of boiling sap to make maple syrup, & sample the finished product over ice cream. Program is weather dependent. Call the nature center to confirm. All children under 16 must be accompanied by an adult. Fee: Free. Donations are appreciated & help fund educational programs.

**Sunday March 17**  
**Maple Syrup Sunday**  
Ledge View Nature Center, Chilton 9am – 1:30pm  
Celebrate the syruping season! Enjoy a pancake breakfast with real maple syrup that is made right here at the nature center. Afterwards take a tour of the sugarbush to learn how to tap a tree & boil the sap down into maple syrup. This is a fun & educational, family friendly, event with tapping tours leaving frequently throughout the day. Tickets sold in advance at [Ledgeviewnaturecenter.org](#)

**Thursday, March 21**  
**Craft Brew Dinner**  
Round Lake Farms at Ariens Nordic Center, 6-8PM  
Go to [ariensnordic.com](#) for details.

**Saturday, March 30**  
**Premier Financial Credit Union Easter Egg Hunt**  
Civic Park, New Holstein, 11:00am  
Kids ages 10 & under can hunt for candy-filled eggs & meet the Easter Bunny!

**Saturday, March 30**  
**Easter Egg Hunt**  
Ariens Nordic Center  
Go to [ariensnordic.com](#) for details.

**Sunday March 31**  
**Easter Brunch**  
Round Lake Farms at Ariens Nordic Center, 9am-2pm  
Go to [ariensnordic.com](#) for details.

## APRIL

**Thursday, April 11**  
**Wine Dinner**  
Round Lake Farms at Ariens Nordic Center, 6-8:30PM  
Go to [ariensnordic.com](#) for details.

**Friday, April 19**  
**NEW Dueling Piano Guys**  
Round Lake Farms at Ariens Nordic Center

**Sunday, April 28**  
**Tea Party**  
Round Lake Farms at Ariens Nordic Center, 1-3PM  
Go to [ariensnordic.com](#) for details.

## MAY

**During the entire month of May** (closed on Mon. & Tues.)  
**Spring Baby Farm Animal Event**  
Mulberry Lane Farm, Hilbert (St. John), 10 AM  
Spring comes to life at the farm. Baby chicks, baby ducklings, baby kid goats, baby lambs, baby piglets, baby calves, baby ponies, baby kittens, baby bunnies... oh baby, do we have babies! Milk a cow, enjoy a hayride, catch a chicken, kiss a pig, cuddle a kitten & more! \$15 Cash/\$15.50 CC per person, ages 2 to 92 (under 24 mos free)

**Saturdays in May**  
**Cave Tours**  
Ledge View Nature Center, Chilton 1pm-2:30pm  
Descend underground to explore Carolyn's Caverns. This interpretive tour covers the geology, biology, & human history of the caves. Walking & adventure tour options available. Check the tour schedule at [Ledgeviewnaturecenter.org](#). Tickets must be purchased in advance of the tour, space limited. \$9.00 per person.

**Saturdays & Sundays in May**  
**Timm House** (1600 Wisconsin Ave.) & **Pioneer Corner Museum** (2103 Main St.), New Holstein 1:00pm-4:00pm or by appt.  
The Timm House, a restored Victorian Mansion (circa 1900) & the Pioneer Corner Museum with 3 galleries of history will be open for viewing.

**Friday, May 3**  
**Tequilla Dinner**  
Round Lake Farms at Ariens Nordic Center  
Go to [ariensnordic.com](#) for details.

**Saturday, May 4**  
**Kentucky Derby Event**  
Round Lake Farms at Ariens Nordic Center  
Go to [ariensnordic.com](#) for details.

**Saturday, May 4**  
**Camp Forest MayFest**  
Camp Forest, Forest Junction (Hwy 10, just east of Hwy 32/57), 9:00am-3:00pm  
Arts & crafts, food, & free fun for kids – games & face painting.

**Friday – Sunday, May 10 – May 12**  
**Stone Prairie Garden Market**  
Stone Prairie  
Go to [ariensnordic.com](#) for details.

**Saturday, May 11**  
**Caveman 3K Adventure Run/Walk**  
Ledge View Nature Center, Chilton 10am-2pm  
Bring your family, friends & four legged buddies out for a 3K run/walk on the beautiful wooded trails at Ledge View Nature Center. Course includes fun obstacles & a section in a cave. Come dressed as a caveman or woman (optional) & stay after the run to enjoy a grill out & live music. Sign up in advance at [Ledgeviewnaturecenter.org](#)

**Saturday & Sunday, May 11-12**  
**Free Mothers on Mother's Day**  
Mulberry Lane Farm, Hilbert (St. John), 10 AM  
Mom visits for FREE on Mother's Day at Mulberry Lane Farm! Cuddle the baby kid goats, baby lambs, baby calves, baby chicks, baby ducklings, baby kittens, baby bunnies, baby,

baby, do we have babies! That's why we celebrate all Moms on Mother's Day.

**Sunday, May 12**  
**Mother's Day Brunch**  
Round Lake Farms at Ariens Nordic Center, 9AM-2PM  
Go to [ariensnordic.com](#) for details.

**Sunday, May 19**  
**Wisconsin Micro-Brewers Beer Fest**  
Calumet County Fairgrounds, Chilton, 1:00pm-6:00pm  
Head to Chilton to taste the best beer around! Over 30 breweries & 100 beers on tap. Must buy tickets before the event date. Call 920-849-2534 for tickets.

**Saturday, May 25**  
**Roller Ski & Bike Biathlon Race**  
Ariens Nordic Center  
Go to [ariensnordic.com](#) for details.

**Monday, May 27**  
**Stockbridge Memorial Day Parade**  
The parade proceeds from Stockbridge School to Firemen-Legion Park. Contact Stockbridge Legion for details.

**Monday, May 27**  
**Memorial Day Celebration**  
Mulberry Lane Farm, 3 miles east of Sherwood on Cty Road B , 10am  
We celebrate our Veterans both active & retired on Memorial Day with a FREE admission into our children's petting area. Our way of saying THANK YOU! to the men & women who have served, & are serving, our country.

## JUNE

**Thursdays in June**  
**Chilton City Band Concerts**  
Hobart Park (231 W Chestnut St), Chilton, 7-9pm  
Free concerts are held every Thursday (June through mid-August, except July 4th) at Hobart Park. Music by the Chilton City Band or special guest performers. Bring a blanket, lawn chair, or stay in your vehicle & enjoy the music. Food & beverage available for purchase.

**Saturdays in June**  
**Cave Tours**  
Ledge View Nature Center, Chilton 1pm-2:30pm  
Descend underground to explore Carolyn's Caverns. This interpretive tour covers the geology, biology, & human history of the caves. Walking & adventure tour options available. Check the tour schedule at [Ledgeviewnaturecenter.org](#). Tickets must be purchased in advance of the tour, space limited. \$9.00 per person.

**Timm House** (1600 Wisconsin Ave.) & **Pioneer Corner Museum** (2103 Main St.), New Holstein 1:00pm-4:00pm or by appt.  
The Timm House, a restored Victorian Mansion (circa 1900) & the Pioneer Corner Museum with 3 galleries of history will be open for viewing.

**Sundays in June**  
**Calumet County Historical Society Museum**  
N3327 Irish Road, Chilton, 1:00pm-4:00pm or by appointment 920-849-4042  
The museum has a large collection of items & documents. They include farm tools & equipment, clothing, household displays, church, business & professional office memorabilia, area business, school, & family histories, & much more. FREE

**June 1-August 31**  
**Country Breeze Farm Event**  
Mulberry Lane Farm, 3 miles east of Sherwood on Cty Road B 10 AM Daily (Closed Mondays)  
Located on the Niagara Escarpment you'll enjoy cool summer breezes at the farm. Milk a cow, pet a pig, cuddle a kitten, catch a chicken, enjoy a hayride & more during your self-guided tour of the farm. Carry-ins welcome so bring a picnic lunch & enjoy a leisurely day at the farm. \$15 Cash/\$15.50 CC per person, ages 2 to 92 (under 24 mos free)

**Saturday, June 1**  
**Stockbridge Lions Walleye Tournament**  
Stockbridge Firemen-Legion Park, Stockbridge, 11:00am-11:00pm  
Lake Winnebago tournament then after the tournament head to the park for awards, food & entertainment.

**Friday, June 7**  
**Brillion Optimist Electric Parade**  
Main Street, Brillion, 8:30pm  
Come & join the fun for this family friendly, FREE event at night! Floats light up the downtown of Brillion along with music from marching bands & local talent.

**Saturday, June 8**  
**BrillionFest**  
Block Party near the Fire Station at Calumet St/Main St, Brillion 8am-Midnight  
A free community event for all ages! Enjoy live music all day while shopping at our vendor fair & strolling through our Machines on Main engine show. Food will be cooked & served by our very own Firefighters with food trucks in the evening. Kids of all ages will enjoy playing carnival games & bouncing

on inflatables. Event is held rain or shine! Follow us on Facebook for more details!

**Saturday, June 8**  
**Brillion Historical Society Museum Open House**  
110 N. Francis Street, Brillion 9am-Noon  
The museum features a large variety of Brillion collections, artifacts, & exhibits. Admission is free.

**Saturday, June 8**  
**Sidewalk Sales**  
AriensCo Museum, Brillion, 9 -12 pm  
Head to the AriensCo Museum store to shop our end-of-year clearance, tour the museum for free, & enjoy a relaxing morning before BrillionFest begins. FREE

**Sunday, June 9**  
**Calumet County Historical Society Museum 3rd Annual Open House**  
N3327 Irish Road, Chilton, 1-4pm  
Free admission.

**Thursday Evenings mid-June through mid-September**  
**Deck Jams**  
Carstens Mill, Brillion, 6:00-9:00pm  
Bring your lawn chairs & enjoy live music. Checkout our Facebook page to see who's on stage!

**Thursday, June 13 – Sunday, June 16**  
**Chilton Summer Festival**  
Various locations around Chilton, events all day long.  
This four-day festival with city-wide rummage sale, street dance, kid's games, fishing tournament for kids, & plenty of other activities.

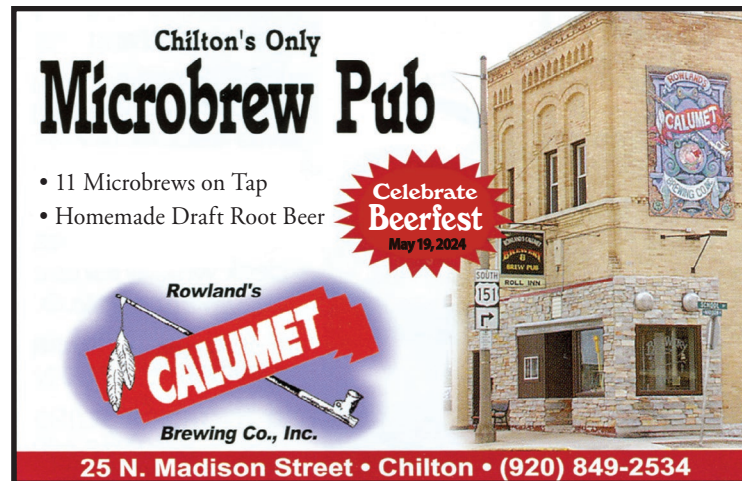
**Friday, June 14**  
**Chilton Farmers Market**  
Klinkner Park, 815 Memorial Drive (Corner of Memorial Drive & Calumet Street), Chilton 10:00am-4:00pm  
Market items include a variety of fresh vegetables & produce, jams, bakery, & crafts.

**Friday, June 14**  
**Concert at Ariens Nordic Center**  
Ariens Nordic Center  
Go to [ariensnordic.com](#) for details.

**Saturday, June 15**  
**DadFest!**  
AriensCo Museum, Brillion 10 am - 2 pm  
Treat the father figure in your life to a day at the AriensCo Museum! This event includes guided tours, a ride-&-drive zero-turn mower course, gift for dad, picnic lunch & family photo opportunities. [www.arienscomuseum.com](#)

**Sunday, June 16**  
**Father's Day at Ariens Nordic Center**  
Ariens Nordic Center  
Go to [ariensnordic.com](#) for details.

**Sunday, June 16**  
**Annual Fathers' Day Parade**  
City of Chilton, 11am





# Calendar of Events

CONTINUED

## Sunday, June 16 Free Dads on Father's Day

Mulberry Lane Farm, 3 miles east of Sherwood on Cty Road B , 10 AM Bring Dad to Mulberry Lane Farm because Dads are FREE on Father's Day. Is Dad brave enough to milk a cow? Can he catch a chicken? Dare him to kiss a pig! It'll be the most memorable Father's Day ever. Dad will enjoy reminiscing about his boyhood days of being on the farm. Bring a picnic lunch to enjoy in the beautiful picnic area overlooking the farm fields or up in the massive 4000 sq ft Hay Mow.

## Friday, June 28 Chilton Farmers Market

Klinkner Park, 815 Memorial Drive (Corner of Memorial Drive & Calumet Street), Chilton 10:00am-4:00pm  
Market items include a variety of fresh vegetables & produce, jams, bakery, & crafts.

## JULY

## Thursdays in July Chilton City Band Concerts

Hobart Park (231 W Chestnut St), Chilton, 7-9pm  
Free concerts are held every Thursday (June through mid-August, except July 4th) at Hobart Park. Music by the Chilton City Band or special guest performers. Bring a blanket, lawn chair, or stay in your vehicle & enjoy the music. Food & beverage available for purchase.

## Thursday Evenings mid-June through mid-September Deck Jams

Carstens Mill, Brillion, 6:00-9:00pm  
Bring your lawn chairs & enjoy live music. Checkout our Facebook page to see who's on stage!

## Fridays in July Chilton Farmers Market

Klinkner Park, 815 Memorial Drive (Corner of Memorial Drive & Calumet Street), Chilton 10:00am-4:00pm  
Market items include a variety of fresh vegetables & produce, jams, bakery, & crafts.

## Saturdays in July Cave Tours

Ledge View Nature Center, Chilton 1pm-2:30pm  
Descend underground to explore Carolyn's Caverns. This interpretive tour covers the geology, biology, & human history of the caves. Walking & adventure tour options available. Check the tour schedule at [Ledgeviewnaturecenter.org](http://Ledgeviewnaturecenter.org). Tickets must be purchased in advance of the tour, space limited. \$9.00 per person.

## Saturdays & Sundays in July Timm House

(1600 Wisconsin Ave.) & Pioneer Corner Museum (2103 Main St.), New Holstein 1:00pm-4:00pm or by appt.  
The Timm House, a restored Victorian Mansion (circa 1900) & the Pioneer Corner Museum with 3 galleries of history will be open for viewing.

## Sundays in July Calumet County Historical Society Museum

N3327 Irish Road, Chilton, 1:00pm-4:00pm or by appointment 920-849-4042  
The museum has a large collection of items & documents. They include farm tools & equipment, clothing, household displays, church, business & professional office memorabilia, area business, school, & family histories, & much more. Free admission.

## July 1-August 31 Country Breeze Farm Event

Mulberry Lane Farm, 3 miles east of Sherwood on Cty Road B 10 AM Daily (Closed Mondays)  
Located on the Niagara Escarpment you'll enjoy cool summer breezes at the farm. Milk a cow, pet a pig, cuddle a kitten, catch a chicken, enjoy a hayride & more during your self-guided tour of the farm. Carry-ins welcome so bring a picnic lunch & enjoy a leisurely day at the farm. \$15 Cash/\$15.50 CC per person, ages 2 to 92 (under 24 mos free)

## Thursday, July 4 Hilbert 4th of July Family Festival & Parade

Main Street & Civic Park, Hilbert, 11:00am-11:00pm  
One of the largest 4th of July parades in WI starts at 11am & goes down Main Street. Family picnic at Civic Park after. Entertainment starts after the 11am parade. Fireworks at approximately 9:30pm.

## Wednesday, July 10 Magic at the Prairie

Stone Prairie, 6:30-8PM  
Go to [ariensnordic.com](http://ariensnordic.com) for details.

## Friday, July 12 Concert at Arians Nordic Center

Arians Nordic Center  
Go to [ariensnordic.com](http://ariensnordic.com) for details.

## Friday, July 12- Sunday, July 14 New Holstein

**Firefighter's Picnic**  
Civic Park, New Holstein, Friday & Saturday 3:00pm-Midnight; Sunday Noon-5:00pm  
Live music Friday night. Live music & large fireworks display Saturday night. Parade at 11am Sunday followed by grilled chicken dinner & live music. All weekend carnival rides, food & beverages.

## Saturday, July 13 Brillion Historical Society Museum Open House

110 N. Francis Street, Brillion 9am-Noon  
The museum features a large variety of Brillion collections, artifacts, & exhibits. Admission is free.

## Saturday & Sunday, July 20-21

**Stockbridge Picnic & Parade**  
Stockbridge Firemen-Legion Park, Stockbridge  
Saturday 4 pm Mass in the park, Live band Saturday night, Kickball Tournament Friday, Saturday & Sunday. 100% Payout. Parade 11:00 am Sunday. Barbecue Chicken Dinner with homemade dressing & all the fixings starting at 11 am. Ladies Legion Auxiliary with homemade desserts on Sunday. Live band Sunday afternoon & a raffle drawing.

## Sunday, July 21 Airport Day

New Holstein Municipal Airport, New Holstein, 7:00am-3:00pm  
Fly-in breakfast (7:00-11:00am) followed by a full variety food court (11:00am-3:00pm). Barrel train rides, kid activities, SuperCub short takeoff/landing competition & entertainment (1:30pm). FREE airplane rides & certification for kids (age 8-17) from 8:30am-Noon.

## Sunday, July 21 Cliff Runner 10k

High Cliff State Park, Sherwood 10:00am  
An extreme 10k trail run of mostly single-track trails designed to take you through the most challenging sections of High Cliff State Park.

## Sunday, July 21 Polka Event

Stone Prairie  
Go to [ariensnordic.com](http://ariensnordic.com) for details.

## Saturday, July 27 Concert at Arians Nordic Center

Arians Nordic Center  
Go to [ariensnordic.com](http://ariensnordic.com) for details.

## Monday, July 29 National Night Out

**Sponsored by the Calumet County Sheriff's Department**  
Calumet County Courthouse, Chilton, 5-8pm  
Meet first responders & police/fire departments from around Calumet County. There is food & fun with many activities. In 2023, activities included a dunk tank (dunk your favorite officer) & a helicopter landing from Theda Star, SWAT team equipment, K-9 demonstration, drone interaction, various fire departments & first responder's equipment.

## AUGUST

## Thursday Evenings mid-June through mid-September

## Deck Jams

Carstens Mill, Brillion, 6:00-9:00pm  
Bring your lawn chairs & enjoy live music. Checkout our Facebook page to see who's on stage!

## Fridays in August Chilton Farmers Market

Klinkner Park, 815 Memorial Drive (Corner of Memorial Drive & Calumet Street), Chilton 10:00am-4:00pm  
Market items include a variety of fresh vegetables & produce, jams, bakery, & crafts.

## Saturdays in August Cave Tours

Ledge View Nature Center, Chilton 1pm-2:30pm  
Descend underground to explore Carolyn's Caverns. This interpretive tour covers the geology, biology, & human history of the caves. Walking & adventure tour options available. Check the tour schedule at [Ledgeviewnaturecenter.org](http://Ledgeviewnaturecenter.org). Tickets must be purchased in advance of the tour, space limited. \$9.00 per person.

## Saturdays & Sundays in August Timm House

(1600 Wisconsin Ave.) & Pioneer Corner Museum (2103 Main St.), New Holstein 1:00pm-4:00pm or by appt.  
The Timm House, a restored Victorian Mansion (circa 1900) & the Pioneer Corner Museum with 3 galleries of history will be open for viewing.

## Sundays in August Calumet County Historical Society Museum

N3327 Irish Road, Chilton, 1:00pm-4:00pm or by appointment 920-849-4042  
The museum has a large collection of items & documents. They include farm tools & equipment, clothing, household displays, church, business & professional office memorabilia, area business, school, & family histories, & much more. FREE

## August 1-August 31 Country Breeze Farm Event

Mulberry Lane Farm, 3 miles east of Sherwood on Cty Road B 10 AM Daily (Closed Mondays)  
Located on the Niagara Escarpment you'll enjoy cool summer breezes at the farm. Milk a cow, pet a pig, cuddle a kitten, catch a chicken, enjoy a hayride & more during your self-guided tour of the farm. Carry-ins welcome so bring a picnic lunch & enjoy a leisurely day at the farm. \$15 Cash/\$15.50 CC per person, ages 2 to 92 (under 24 mos free)

## Thursday, August 1 National Night Out

**Sponsored by the Brillion & Reedsville Police Depts.**  
Peters Park, Brillion 6:00-9:00pm  
Bring your family down to meet local officers, Food Trucks, ThedaStar Helicopter, Police Vehicles, Fire & EMS Trucks, Magic, Juggling, Face Painting & Fireworks at dusk.

## Thursday, August 1 Chilton City Band Concerts

Hobart Park (231 W Chestnut St), Chilton, 7-9pm  
Free concerts are held every Thursday (June through mid-August, except July 4th) at Hobart Park. Music by the Chilton City Band or special guest performers. Bring a blanket, lawn chair, or stay in your vehicle & enjoy the music. Food & beverage available for purchase.

## Sunday, August 4 St. John/Sacred Heart Parish Car Show & Picnic

St. John/Sacred Heart School, Sherwood, 10:00am-7:00pm  
Car show & picnic including live music, kids' games, food & refreshments.

## Thursday, August 8 Chilton City Band Concerts

Hobart Park (231 W Chestnut St), Chilton, 7-9pm  
Free concerts are held every Thursday (June through mid-August, except July 4th) at Hobart Park. Music by the Chilton City Band or special guest performers. Bring a blanket, lawn chair, or stay in your vehicle & enjoy the music. Food & beverage available for purchase.

## Saturday, August 10 Brillion Historical Society Museum Open House

110 N. Francis Street, Brillion 9am-Noon  
The museum features a large variety of Brillion collections, artifacts, & exhibits. Admission is free.

## Saturday & Sunday, August 10-11

**Steam & Gas Engine Show**  
Calumet County Fairgrounds, Chilton, 10:00am-4:00pm  
Check out antique farm machinery at this show. This year featuring John Deere. Also, a model steam engine display, toy show, & flea market.

## Friday & Saturday, August 16-17

**Voices of Peace Gospel Music Fest**  
Hilbert Civic Park, Hilbert Friday 11am-7pm; Saturday 10am-7pm  
One of the largest gospel music festivals around! Bring your lawn chairs, bring your family, & be ready for a wonderful, spirit-filled weekend. Please, no carry-ins. Food, snacks, & refreshments will be available.

## Saturday, August 17 Mike Arians Run/Walk

Arians Nordic Center  
Go to [ariensnordic.com](http://ariensnordic.com) for details.

## Sunday, August 25 Forest Junction Car Show

Freitag Memorial Park, Forest Junction  
Registration: 9:30-11:30am; Voting ends at 1:30pm; Awards: 2:30pm  
Open to any car. \$10 entry fee includes \$5 food coupon. Event runs with the Forest Junction Picnic. Questions-email [fjcl@tds.net](mailto:fjcl@tds.net) or call 920-989-1301.

## Sunday, August 25 Forest Junction Picnic

Freitag Memorial Park, Forest Junction, 11am-4pm  
Picnic, food, music, raffles, & car show. Questions-email [fjcl@tds.net](mailto:fjcl@tds.net) or call 920-989-1301.

## Friday, August 30 – Monday, September 2

**Calumet County Fair**  
Calumet County Fairgrounds, Chilton, Noon on Friday until Monday afternoon  
The Biggest Little Fair in Wisconsin! Fair by day, festival by night.

## SEPTEMBER

## Dates TBD September U.S. Biathlon

**National Team Weekend of Events**  
Arians Nordic Center  
Go to [ariensnordic.com](http://ariensnordic.com) for details.

## Thursday Evenings mid-June through mid-September

**Deck Jams**  
Carstens Mill, Brillion, 6:00-9:00pm  
Bring your lawn chairs & enjoy live music. Checkout our Facebook page to see who's on stage!

## Fridays in September Chilton Farmers Market

Klinkner Park, 815 Memorial Drive (Corner of Memorial Drive & Calumet Street), Chilton 10:00am-4:00pm  
Market items include a variety of fresh vegetables & produce, jams, bakery, & crafts.

## Saturdays in September Cave Tours

Ledge View Nature Center, Chilton 1pm-2:30pm  
Descend underground to explore Carolyn's Caverns. This interpretive tour covers the geology, biology, & human history of the caves. Walking & adventure tour options available. Check the tour schedule at [Ledgeviewnaturecenter.org](http://Ledgeviewnaturecenter.org). Tickets must be purchased in advance of the tour, space limited. \$9.00 per person.

## Saturdays & Sundays in September

**Timm House** (1600 Wisconsin Ave.) & **Pioneer Corner Museum** (2103 Main St.), New Holstein 1:00pm-4:00pm or by appt.  
The Timm House, a restored Victorian Mansion (circa 1900) & the Pioneer Corner Museum with 3 galleries of history will be open for viewing.

## Sundays in September Calumet County Historical Society Museum

N3327 Irish Road, Chilton, 1:00pm-4:00pm or by appointment 920-849-4042  
The museum has a large collection of items & documents. They include farm tools & equipment, clothing, household displays, church, business & professional office memorabilia, area business, school, & family histories, & much more. FREE

## Friday, August 30 – Monday, September 2

**Calumet County Fair**  
Calumet County Fairgrounds, Chilton, Noon on Friday until Monday afternoon  
The Biggest Little Fair in Wisconsin! Fair by day, festival by night.

## Saturday, September 7 22nd Annual Crafty Apple Fest

Hobart Park/Calumet County Fairgrounds, Chilton, 9am-4pm  
Free event with more than 160 craft & food vendors, Apple & Pumpkin Beer, Pumpkin Bowling, live music, kids' events, car show & much more.

## Sunday, September 8 Grandparents Day

**on the Farm**  
Mulberry Lane Farm, 3 miles east of Sherwood on Cty Road B  
Grandparents are FREE on National Grandparents Day at Mulberry Lane Farm! You'll have the opportunity to share your childhood memories of milking cows, driving tractors, morning chores & more as you tour the farm & interact with the farm animals. Take an extra moment to appreciate all the joy & wisdom that grandparents bring to our lives. Memories of growing up on the family farm will come to life once again.

## September 13 – October 31 Pumpkin Harvest Celebration

Mulberry Lane Farm, 3 miles east of Sherwood on Cty Road B , 10am  
Milk a cow, catch a chicken, kiss a pig, cuddle a kitten, enjoy a hayride & pick your own FREE pumpkin too! The farm is beautiful in fall! The kiddos will enjoy time in the Old Fashion Play Area. Huge tractor tires to ascend, hollow logs to climb through, bouncy balls too. Mom & Dad will enjoy reminiscing of a simpler time while strolling through The Olde Tool Shed & A Step Back in Time Barn. Both filled with antiques & nostalgic memorabilia. Take time to visit the farm's food trailer open last weekend in September & weekends in October.

## Friday-Sunday September 20 - 22

**Kids Fun Run & Diaper Dash & Toddler Trot** (Friday 9/20)  
**5K & 10K events** (Saturday 9/21)  
**Full, Half, Relay Marathons & Competitive Walk Half Marathon** (Sunday 9/22)  
During the Community First Fox Cities Marathon presented by Miron Construction weekend of events, we bring together thous&s of participants, volunteers, spectators, local businesses & community partners at eight events including a marathon, half marathon, relay marathon, 10K, 5K, kids events & an expo.

## Saturday, September 21 Wings & Wheels

New Holstein Municipal Airport, New Holstein, 7:00am-3:00pm  
The event is a chance to view planes flying in & see them up close. There is also a car show to check out. Pancake breakfast from 8am-11am.

## Wednesday, September 25 Honey Harvest Fest

AriansCo Museum, Brillion, 1 - 6 pm  
In honor of a successful honey season at the AriansCo Apiary, the Museum celebrates with honey tastings, demonstration bee hive, beekeeper Q&A, store specials, & pollinator activities for kids throughout the Museum. FREE event. For full details visit: [www.arienscomuseum.com](http://www.arienscomuseum.com)

## OCTOBER

## Saturdays in October Cave Tours

Ledge View Nature Center, Chilton 1pm-2:30pm  
Descend underground to explore Carolyn's Caverns. This interpretive tour covers the geology, biology, & human history of the caves. Walking & adventure tour options available. Check the tour schedule at [Ledgeviewnaturecenter.org](http://Ledgeviewnaturecenter.org). Tickets must be purchased in advance of the tour, space limited. \$9.00 per person.

## Friday, October 4 Chilton Farmers Market

Klinkner Park, 815 Memorial Drive (Corner of Memorial Drive & Calumet Street), Chilton, 10am-4pm  
Market items include a variety of fresh vegetables & produce, jams, bakery, & crafts.

## Fridays & Saturdays, October 4-5, 11-12, 18-19, & 25-26

## Haunted Halloween Golf Cart Rides

Hickory Hills Country Club, Chilton  
Please purchase tickets prior to start time; Rides start at 6:30pm  
Take a spooky chauffeured limo golf cart ride throughout the haunted property of Hickory Hills Country Club. Visit the event's Facebook page for weather updates.

## Friday, October 11 Chilton Farmers Market

Klinkner Park, Chilton 10:00am-2:00pm  
Market items include a variety of fresh vegetables & produce, jams, bakery & crafts.

## Friday – Sunday, October 11 - 13

## Mid-Shores HBA 2024 Parade of Homes & Home Planning Guide

Various sites around Calumet County & Fox Cities Area  
Visit [midshoreshomebuilders.com](http://midshoreshomebuilders.com) for times & more details. Begin to visualize your dream home at the Parade of Homes. Whether you are searching for ideas for your two-story or ranch home, lakeshore property or looking to update a room, your search starts here!



# Calendar of Events CONTINUED

**Friday & Saturday,  
October 18 – October 19**

**Halloween Candlelight Cave Tours**  
Ledge View Nature Center, Chilton  
5:30-8:30pm (Friday), 4:30- 8:30pm (Saturday)  
Take lantern lit trails through the woods & meet some unusual characters with strange stories along the way. Descend underground & explore the caves by candlelight. This is a fun, not scary, educational event for the whole family. Tours leave every half hour & take approximately 1.5 hours. Tickets must be purchased in advance at [Ledgeviewnaturecenter.org](http://Ledgeviewnaturecenter.org)

**Friday – Monday,  
October 18 – October 21**

**Oktoberfest at Ariens Nordic Center**  
Ariens Nordic Center  
Go to [ariensnordic.com](http://ariensnordic.com) for updated details.

**Saturday, October 19  
Pumpkin Walk**

Brillion Nature Center, Brillion, 6:00pm-8:30pm  
The Nature Center's stroller-friendly Cottonwood Trail will be lined with hundreds of lit jack-o-lanterns carved by local school children during this family-friendly Halloween event. Back at the building, enjoy refreshments inside & warm up by listening to stories up in the loft or sitting around the bonfire. Overflow parking in the lot behind the Brillion Elementary/Middle School will have free shuttle buses running every 15 minutes for the duration of the event. Fee: Free

**Saturday, October 19  
Night at the BOO!seum**

AriensCo Museum  
Brillion, 4:00 pm - 7:00 pm  
Join us for an evening of kooky, spooky family fun! Museum collections, curiosities, & other oddities come to life after hours for a unique Halloween experience! Trick-or-Treating through the exhibits, games for prizes & a Mad Science Lab included. [www.arienscomuseum.com](http://www.arienscomuseum.com)

**Saturday, October 19  
Halloween Campground Walk**

High Cliff State Park  
Sherwood, 4:00pm-8:00pm  
Walk the roads in the Family Campground to see campsites decorated for Halloween. Flashlights recommended. Concessions available.

**Saturday, October 26  
A Walk Through Brillion**

Brillion Community Center or Carstens Mill, Brillion, 5-10pm  
20-25 Businesses & Civic Groups volunteer every year to host the "Walk." Participants buy a \$40 wristband & a cup & visit the "Stops" along Main Street to enjoy a pour of wine, beer & a selection of N/A beverages. Each stop also has a food sample, ranging from candy & cookies to taquitos, sliders & firehouse chili. 10-\$500 raffle prizes & a 50/50 raffle are offered, as well as a band playing at Carstens Mill until 10:00.

**Sunday, October 27**

**Spooktacular at Ariens Nordic Center**  
Ariens Nordic Center  
Go to [ariensnordic.com](http://ariensnordic.com) for updated details.

**Sunday, October 27**

**Halloween Costume Party**  
Mulberry Lane Farm, 3 miles east of Sherwood on Cty Road B, Opens 10AM  
(Contest 12:00 PM NOON)  
Save \$3 on Admission & a chance to WIN a Gift Certificate for 4 to visit the farm.  
Sun 10/27/2024 join us at Mulberry Lane Farm for a farm-friendly costume party. Children ages 2 to 13 will receive \$3 off their admission when they are dressed in their Halloween costume. At 12:00 PM we'll have a parade of costumes in the big barn. All other farm activities will still be going on. Catch a Chicken, Pet a Pig, Milk a Cow, Hayride to PuMpKiN Patch to pick your own FREE pumpkin too! \$15 Cash/\$15.50 CC per person, ages 2 to 92 (under 24 mos free) Admission includes trip to The Pumpkin Patch

## NOVEMBER

**Saturday, November 9**

**Stockbridge School Annual Craft Fair**  
Stockbridge High School & Middle School Gym, Stockbridge, 9 am-2 pm  
Over 80 arts & crafts vendors. Contact SbPTO@stockbridge.k12.wi.us to be a vendor.

**Friday, November 15  
Holiday Cocktails &**

**Hors d'oeuvres Class**  
Round Lake Farms at Ariens Nordic Center  
6:30-8:30pm  
Go to [ariensnordic.com](http://ariensnordic.com) for updated details.

**Thursday, November 14  
-Sunday, November 17**

**Christmas Kick Off**  
Various locations in Brillion  
Retail businesses throughout Brillion will be offering special discounts to shoppers. Shop early & save!

**Thursday, November 28 –  
Monday, December 23**

**The North Pole Christmas Village**  
N5207 Lemke Road, Chilton  
4:00pm-8:00pm; Closed Mondays  
A magical holiday experience awaits! Come inside & walk through our amazing animated Christmas scene display & pick up a special gift in our gift shop. Don't forget to stop by our concession area for a Christmas cookie & milk. No trip would be complete without children telling Santa what they want for Christmas while taking their picture with Santa.

## DECEMBER

**Saturdays before Christmas  
December 7, 14 & 21**

**Christmas at Ariens Nordic Center**  
Ariens Nordic Center  
Go to [ariensnordic.com](http://ariensnordic.com) for updated details.

**Fridays, Saturdays & Sundays  
in December**

**Delightfully Calumet Inc.  
Holiday Light Show**  
Hobart Park/Calumet County Fairgrounds, Chilton, 5-9pm  
A Christmas light show featuring fourteen 150-foot displays with various themes will be held at Hobart Park/Calumet County Fairgrounds

located at 231 W Chestnut Street, Chilton. The fourteen displays boast over 140,000 lights synchronized to Christmas music. Vehicles will drive through the park/fairgrounds to view the displays. Admission is a canned food donation that will be distributed to Calumet County food pantries.

**Fridays, Saturdays & Sundays,  
December 6-22**

**Timm House Christmas**  
Timm House, New Holstein  
[newholsteinhistory.info](http://newholsteinhistory.info) for times  
Annual holiday celebration featuring themed decorations in every room of the home's first floor.

**Sunday, December 1 - Saturday,  
December 23**

**The North Pole Christmas Village**  
N5207 Lemke Road, Chilton  
4:00pm-8:00pm; Closed Mondays  
A magical holiday experience awaits! Come inside & walk thru our amazing animated Christmas scene display & pick up a special gift in our gift shop. Don't forget to stop by our concession area for a Christmas cookie & milk. No trip would be complete without children telling Santa what they want for Christmas while taking their picture with Santa.

**Saturday, December 7  
Brunch with Santa**

Round Lake Farms at Ariens Nordic Center  
Go to [ariensnordic.com](http://ariensnordic.com) for updated details.

**Saturday, December 7  
Christmas in the Marsh**

Brillion Nature Center, W1135 Deer View Rd, Brillion, 3 – 8pm  
3:30 – 7:30 Hayrides  
5:00 – 7:00 Pictures with Santa  
3:00 – 8:00 Bonfire  
Live musical performances on the hour. Food & beverages for sale. Admission Fee: \$10/carload.

**Saturday, December 7  
Christmas Workshop**

AriensCo Museum, Brillion, 10 am - 4 pm  
Young tinkerers make their own gifts for holiday giving in this hands-on make & take event. Children ages 5 & up assemble gifts using real tools in a real workshop under the guidance of a jolly, bearded supervisor. All tools, safety glasses, supplies & gift wrap included. For full details visit: [www.arienscomuseum.com](http://www.arienscomuseum.com)

**Saturday, December 7  
Chilton's Holiday Parade of Lights**

5:30pm  
The parade starts at Chilton Middle School & ends near City Hall in Chilton with lighted units & magical floats.

**Sunday, December 8**

**New Holstein Country Christmas**  
New Holstein High School Cafeteria  
8:00am-Noon  
Fun for the whole family! Enjoy breakfast with Santa hosted by the New Holstein Lions Club, children's craft activities, games & much more.

**Saturday, December 21**

**Santa Ski Race at Ariens Nordic Center**  
Ariens Nordic Center  
Go to [ariensnordic.com](http://ariensnordic.com) for updated details.

# Lodging

HOTELS & MOTELS			DOG FRIENDLY
Best Western Stanton Inn, The	(920)849-3600	1101 E. Chestnut Street, Chilton	
Cobblestone Inn & Suites	(920)756-3800	800 W. Ryan Street, Brillion	Yes
Starlite Motel	(920)898-4265	1321 Milwaukee Drive, New Holstein	Yes
CAMPING			
Calumet County Park	(920)439-1008	N6150 County Road EE, Hilbert (Located north of Stockbridge off of Highway 55)	Yes
High Cliff State Park	(920)989-1106	N7630 State Park Road, Sherwood	Yes
Lakeview RV Park & Cabins	(920)439-1495	N4475 Ledge Road, Chilton	Yes
RENTALS			
Grove's Guest House	(920)898-9707	1729 Monroe Street, New Holstein	
Rosemary Parsonage	<a href="http://airbnb.com">airbnb.com</a>	117 W. Water Street, Brillion	
Schwarz's Guesthouse	(920)894-7850	N102 County Road A, New Holstein (in St. Anna)	
Twilight on the Water	(920)379-2440	N4103 Twilight Beach Road, Chilton (south of Stockbridge)	
Yellow House, The	<a href="http://airbnb.com">airbnb.com</a>	234 S. Main Street, Brillion	Yes



[airbnb.com/h/rosemaryparsonage](http://airbnb.com/h/rosemaryparsonage)

*Rosemary Parsonage*  
117 West Water Street | P.O. Box 4  
Brillion, WI 54110



**The Yellow House**  
234 S. Main St., Brillion  
**920-418-4844**  
LISTED ON **AirBnB**  
THE YELLOWHOUSE  
  
PERFECT PLACE TO STAY WHEN YOU'RE TRAVELING FOR A WEDDING OR VISITING THE ARIENS NORDIC CENTER.  
  
*Live Music  
Most Thursdays  
JUNE – SEPTEMBER*  
CHECK US OUT ON   
114 W. WATER ST.  
BRILLION, WI  
920.901.4542  
[CARSTENSMILL.COM](http://CARSTENSMILL.COM)



# Arts and Culture



The arts & culture scene continues to grow in Calumet County. In this section, discover local art pieces in the form of murals and barn quilts, and live art available at the county's performing art centers and museums.

## MURALS BRILLION MURAL

Schroth Flower Mill  
119 S. Main Street, Brillion

"Brillion Pride" was created through the "Bazaar After Dark" event in 2019. The piece features a warm interaction between a lion (the local mascot) and butterfly. The flowers were intended to blend with the floral business on which it's painted, and at ground level, provide viewers with an opportunity to interact.

Painted by Jodie Naze

## CHILTON HISTORICAL MURAL

40 W. Main Street, Chilton  
[calumetcountyhistoricalsociety.org/mural](http://calumetcountyhistoricalsociety.org/mural)

The imagery in the Chilton mural spans 75 yrs. from 1840 through 1915 and is portrayed in a 'hand-tinted' image. This style of imagery was a popular technique of the era bringing color into the monochromatic imagery of the day. Sitting firmly on the Manitowoc River, Chilton's matriarch, Catherine Stanton can be seen prominently positioned in front of the former State Street Bridge. Just beyond the ironclad bridge you can see a suggestion of a fading grist mill that the Stanton's erected and was fundamental in Chilton's early development during the time. Catherine is flanked on her right by members of a Ho-Chunk family, each of which has tribal beads and patterns embedded into their clothing. Catherine's image is a hybrid of two different photos of her and she adorns

a working-class dress of the era. Mrs. Stanton is flanked on her left by both Civil War veterans Harrison Hobart and George Breeds. Both men were fundamental toward Chilton's continued growth and prosperity after their Civil War military service concluded. Fellow Chilton Civil War veteran Adam Schluchter holds the American flag. Former Hotel Chilton and St. Mary's parish stand as iconic backdrops for a section of the Chilton boy's homecoming from the Great War. On the far right of the wall, an architectural sketch of the Malt House sits directly above Breed's shoulder. The central visuals are different tributes toward agriculture; each has a different emphasis but are all centrally positioned in their importance. In these options, you will find two local women raking hay, and a group of farmers appear to be delighted by their new John Deere tractor. Lastly, the font used in 'Chilton' is pulled from a turn of

the century advertisement and sits in the azure sky above the bridge. All photographic references used were locally based.

Painted by James Barany and student intern artists Emma Barany, Olivia Bonlander, Julien Roberson, Claesa Waight and Reagen Mulvey

## CHILTON LIBRARY MURAL AutoSource

61 E. Chestnut Street, Chilton  
[audifaxart.com/news](http://audifaxart.com/news)

"Be Anything" shows a face split in two — one half being your average reader and the other a fantastical character accessed through the book she is reading. The meaning is: "Through books, movies and events from our local library, we are able to experience a different story and have aspects of our own lives reflected back to us. We can enter into the life of another in a way surpassing our own limits. Connecting with their inner strength to discover our own, as well as seeing parts of our lives that may need attention & growth. You can also find subjects of interest and learn new things to take action towards your own dreams."

This mural was created for the Chilton Public Library's summer reading program intended to not only spark wonder in those passing by, but also bring the community together by inviting teens to assist in its creation.

Painted by Audifax (Brandi Kupsky) with help from local teens.



## CHILTON POST OFFICE MURAL

Chilton Post Office  
57 E. Main Street, Chilton

As part of the New Deal, the U.S. Treasury Department Section of Fine Arts commissioned the painting of murals inside newly constructed federal buildings such as post office buildings. It was also

a way to bring public art to rural communities. Artists were awarded contracts through competition where they would anonymously submit their sketches. The mural needed to depict ordinary citizens in an "American scene" in a realist manner. The largest competition was the 48-States Post Office Mural Competition of 1939. Winners were shown in Life Magazine. Wisconsin's winning mural was painted at the Chilton Post Office. The mural "Threshing Barley" was painted by Charles W. Thwaites in 1940. There were 35 such murals painted in post office buildings across the state.

## STOCKBRIDGE HISTORICAL MURAL

Schumacher's Shanty  
101 S. Military Road, Stockbridge  
[calumetcountyhistoricalsociety.org/mural](http://calumetcountyhistoricalsociety.org/mural)

The imagery in the Stockbridge mural spans 85 yrs. from 1830 through 1915 and is portrayed in a 'hand-tinted' image. This style of imagery was a popular technique of the era bringing color into the monochromatic imagery of the day. In the foreground founders Reverend Cutting Marsh can be seen staunchly defending the infamous Stockbridge Bible, just to his left is prominent Stockbridge tribe leader John Quinney. Both men fought hard to establish the rights of the Stockbridge-Munsee tribe and promote members' transition into Western culture and Christian-based religion. John Quinney's sister, Electa Quinney can be easily found with a blue shawl as a central focus of the mural. Electa is well known as the first female educator in the State of Wisconsin and resided in Stockbridge for a great deal of her life.

The founding family of the Schumacher's Shanty, the George Hemauer family can be located once again, looking out over the porched area of the wall. Just below them a carte-de-visite portrait of Miriam Scott of Stockbridge, the sister of E.W. Scott, to the right a tin-type portrait of Ohio native, Isaac Wagner Acker who settled in Stockbridge, can be found in his work attire. Acker served in the

21st Wisconsin during the Civil War. At the time of his enlistment he gave his occupation as a mason, the tools with which he posed, representing that construction trade are visible. Acker was severely wounded at the Battle of Champions III and was disabled from his wounds. He was honorably discharged from service on March 4, 1862.

A local woman boasts her daily catch on a flat hull with her canine companion, and completing the foreground is a tribute to the local brick-making industry that once flourished in Stockbridge on the shores of Lake Winnebago. The background begins on the left with a tribute to the well-known Native American Old Mission House. The Leander Choate, a local steamboat can be found departing the Stockbridge Harbor. A local Menomonee fishing from a canoe is ready to throw his spear into the murky waters, paving the way for modern day Sturgeon spearing in the area. Another sturgeon fisherman boasts his prize. A tribute is given to the International Order of Odd Fellows (IOOF), who helped construct new buildings in the Stockbridge area during this era. The symbol of an "eye" in the upper section of the mission house is reference to the IOOF. All photographic references used were locally based.

Painted by James Barany

## ZANDER PRESS INC. MURAL

425 W. Ryan Street, Brillion

[zanderpressinc.com](http://zanderpressinc.com)

The Zander Press "Ignite Your Flight" mural was created in the midst of Covid-19 to remind us of what is important to us. Stepping in front of the giant WINGS and taking a photo not only gives them life, but makes all of us feel beautiful within them. Step into the camera's view and share with the world what makes YOU soar and uplifts your spirit. Mural is located on the west exterior wall.



# Arts and Culture CONTINUED



**PERFORMING ARTS CENTERS**  
**ENDRIES PERFORMING ARTS CENTER (EPAC)**  
 W1101 County Road HR, Brillion  
[endriespac.com](http://endriespac.com)

The Endries PAC is a 600-seat performing arts center located at Brillion High School. The theater hosts nationally acclaimed singers, bands, comedians, and annual performances by Kids from WI and the Milwaukee Symphony Orchestra.

**ENGLER CENTER FOR THE PERFORMING ARTS**  
 530 W. Main Street, Chilton  
 (920)849-2880  
[englercenter.com](http://englercenter.com)

The Engler Center is a 735-seat performing arts center located at Chilton High School. The theater hosts a variety of shows, including performances by the Calumet County Community Theater. Visit

the website for ticket and show information.

**MUSEUMS**  
**ARIENSCO MUSEUM**  
 109 Calumet Street, Brillion  
 (920)756-4455  
[arienscomuseum.com](http://arienscomuseum.com)

See our ad on the inside front cover. This unique and interactive museum tells the story of this country's journey from horse-and-plow to horsepower. Vintage equipment, artifacts, and memorabilia capture significant moments that have shaped the American landscape for more than 12 decades. Historic vignettes transport you into an 1890s factory, 1930s farm culture, and a 1960 backyard. Step inside a life-sized snow globe for a unique photo opportunity! Housed inside the company's original manufacturing facility, the 14,000 sq ft museum features STEM-focused interactive exhibits for kids to learn how gears, belts, and pulleys

work to power machines. Open M-F 8-4. Check website for extended summer hours.

**BRILLION HISTORICAL MUSEUM AND HISTORY HOUSE**  
 110 N. Francis Street, Brillion  
 (920)756-9294  
[brillionhistoricalsociety.org](http://brillionhistoricalsociety.org)

Museum exhibits include farm machinery, an old fire truck, arrowheads & artifacts, woodworking tools, blacksmith tools, and much more! The museum is located behind the History House or "Green Hotel", Brillion's first hotel, built in 1872. No admission fee but donations appreciated. Open the second Saturday in June, July, and August from 9am-Noon or by appointment.

## CALUMET COUNTY HISTORICAL SOCIETY MUSEUM

N3327 Irish Road, Chilton  
 (920)849-4042  
[calumetcountyhistoricalsociety.org](http://calumetcountyhistoricalsociety.org)

The museum has a large collection of items and documents. They include farm tools and equipment, clothing, household displays, church, business and professional office memorabilia, area business, school, and family histories, and much more. Open from 1-4pm on Sundays - June through September. Free admission. Contributions welcomed. Located at the corner of Irish Road and Highway 32/57 southeast of Chilton.

**THE HERITAGE MUSEUM AT ST. MARTIN HERITAGE PARK**  
 N3298 County Road T, New Holstein  
 (920)849-9281  
[stmartinheritagepark.org](http://stmartinheritagepark.org)

Nestled inside the St. Martin Heritage Chapel lies the history of the former St. Martin Catholic Church and its founders. German records from over a century ago were translated and photos collected to reveal the heart and soul of the community. Special features include: the complete history of the property, a timeline of the Catholic Education of St. Martin Catholic School, and stories of local heroes from the American Civil War and WWI. The museum is the work of so many hands and you are invited to browse the history any time at stmartinheritagepark.org. The Heritage Museum is open during most events or call Kathy, Museum Director, for a personal tour at (920)849-9281.

**PIONEER CORNER MUSEUM**  
 2103 Main Street, New Holstein  
 (920)898-5746

[newholsteinhistory.info/pioneer-corner](http://newholsteinhistory.info/pioneer-corner)  
 Vintage displays, antique artifacts, a diorama of old New Holstein, streets of New Holstein vignettes, the Fenn Button Collection, Turnverein and Schutzenverein memorabilia, and much more. Open Saturdays and Sundays, May through October, from 1-4pm or by appointment.

ment. For an appointment, contact the New Holstein Historical Society at (920)898-5746. Fee is charged for admission.



## TIMM HOUSE

1600 Wisconsin Avenue  
 New Holstein  
 (920)898-5746  
[newholsteinhistory.info/timm-house](http://newholsteinhistory.info/timm-house)  
 See our ad on page 31.

This Greek Revival style home from 1873 was restored to its Victorian elegance in 2007. It is one of the best examples of Stick Style design remaining in the Midwest. The house was listed on the National Register of Historic Places in 1996. It was originally owned by Hermann Christian Timm and his wife Augusta, im-

migrants from Germany. The house remained in the Timm family until 1974, during which time very few changes were made to the building. The house is restored to its original condition during the period from 1892 to 1906. Guided tours of both the first and second floor take approximately 45 minutes. The house is open Saturdays and Sundays, May through October, from 1-4pm or by appointment. It is also open between Thanksgiving and Christmas for the Timm House Christmas. For an appointment, contact the New Holstein Historical Society at (920)898-5746. Fee is charged for tours.



**Village of HARRISON**  
 WHERE OPPORTUNITY LIVES

**A Place Your Business Can Call Home**  
 Harrison grew nearly 25% from 2015 - 2022

## GET EVERY ADVANTAGE

- Prime location bordering City of Appleton & Menasha
- Commercial development opportunities
- Pro-business government
- Great quality of life amenities on northern tip of Lake Winnebago



[harrison-wi.org](http://harrison-wi.org) | (920) 989-1062



# Arts and Culture CONTINUED



The barn quilt, typically an 8 foot by 8 foot representation of a quilt square painted on plywood and hung on a barn, has made its way to the rural landscape of Calumet County. These pieces of art cause us to pause, take notice of the surrounding beauty and reflect on the cultural contribution that agriculture has made to the area. We invite you to drive our rural roads and visit our barn quilts.

These quilts were done through the Calumet County Barn Art Program, which utilizes community volunteers and donors. The program continues to grow so we hope you come back year after year to see the changes. Go to [travelcalumet.com](http://travelcalumet.com) for a current list of locations. The locations of the barn quilts listed here are on the Calumet County Map on pages 18-19

## INSTALLED BARN QUILTS

1. **Patchwork Sun**  
W3453 Highway 114, Hilbert
2. **Friendship Star**  
W3826 Crosstown Road, Hilbert
3. **Crow's Beak**  
W2537 Crosstown Road, Hilbert
4. **Star of the East**  
W1639 County Road K, Brillion
5. **Harvest Star**  
W1411 County Road K, Brillion
6. **Lucky Shamrock**  
N8789 Boettcher Road, Brillion
7. **Star Compass**  
W962 Rusch Road, Brillion
8. **Windmill Star**  
23720 County Road K, Brillion
9. **Odd Fellow's Chain**  
N9149 Long Lake Road, Brillion
10. **New Shining Star**  
N8819 County Road PP, Brillion
11. **Pins in Motion**  
429 Fairway Drive, Brillion
12. **Pineray**  
W1623 Dreier Road, Hilbert
13. **Compass Star Variation**  
W909 Riverview Road, Hilbert
14. **Sunburst**  
N5564 West River Road, Hilbert

15. **Stacked Stars**  
1601 Cottonwood Road, Brillion
16. **Brown-Eyed Susan**  
628 Cottonwood Road, Brillion
17. **Farmer's Daughter**  
8620 State Highway 67, Kiel
18. **Our Country**  
N1691 S. Washington Road, Chilton
19. **Blue Star**  
N1675 Dorn Road, Chilton
20. **Four and Twenty Blackbirds**  
N2818 State Highway 57, New Holstein
21. **Tulip Nine Patch**  
N3086 State Highway 57, New Holstein
22. **Sunny Place**  
W1960 Quarry Road, New Holstein
23. **Shadow Rays**  
900 Francis Street, Chilton (behind stage at Calumet County Fairgrounds)
24. **Star Squared**  
W3914 County Road F, Chilton
25. **Starry Path 2**  
N5204 McHugh Road, Chilton
26. **Union Square Variation**  
W2843 Killsnake Road, Chilton

*Visit Historic*  
**New Holstein**  
*New Holstein, founded in May of 1848, is typical of mid-western rural prairie communities formed around the railroad freight and passenger stations.*

**The Timm House**  
1600 Wisconsin Avenue

The Pioneer Corner Museum, located in a building which served as one of New Holstein's early General Stores, houses an extensive collection of artifacts, displays, and vignettes focused on the community's history. A glimpse of turn of the century New Holstein may be found in the museum's Main Gallery which contains vignettes of period city businesses as well as a one room school house. The museum's South Gallery features the Fenn Button Collection, one of North America's finest historical button collections, and current exhibits with local historical interest. Pioneer Corner Museum hours and open dates are the same as those of the Timm House except PCM is not open in December. Special tours are also available by calling (920) 898-5746. An admission is charged. Combo tickets with Timm House visit are available.

The Timm House, built in 1873, is one of the Midwest's finest remaining "Stick-style" Victorian homes. As the recipient of a 1.2 million dollar refurbishment project completed in 2007, the Timm House is a resplendent example of Victorian Era living in a rural Wisconsin community. The home is open for tours from the first weekend in May through the last weekend in September, on Saturdays and Sundays, from 1:00 to 4:00pm. Tours, by appointment, are also available by calling (920) 898-5746. Special hours are offered during the month of December for a yearly themed "Christmas at the Timm House". An admission fee is charged.

**The New Holstein Historical Society**  
[www.newholsteinhistory.info](http://www.newholsteinhistory.info)  
**920-898-5746**  
Also on Facebook at  
[www.facebook.com/newholsteinhistoricalsociety](http://www.facebook.com/newholsteinhistoricalsociety)

**Pioneer Corner Museum**  
2103 Main Street

**Chilton**  
CHAMBER OF COMMERCE  
CHILTON IS OUR BUSINESS

**2024 Events**  
WI Microbrewers Beerfest, May 19  
Farmers Market, Fridays Jun-Oct  
Chilton Summer Festival, Jun 13-16  
Calumet County Fair, Aug 29 - Sep 2  
Crafty Apple Fest, Sep 7  
Holiday Parade of Lights, Dec 7

**Attractions**  
Ledge View Nature Center  
Calumet County Historical Museum  
Engler Center for the Performing Arts  
Gravity Park USA  
Shopping, Restaurants & Entertainment

[www.ChiltonChamber.com](http://www.ChiltonChamber.com) • 920-418-1650

*sarah koph*  
PHOTOGRAPHY

## WORK, PLAY, SHOP, CAMP, & STAY for the SUNSETS

### MANUFACTURING

**STOCKBRIDGE MANUFACTURING**  
920.439.1213

**STOCKBRIDGE ENGINEERING**  
920.439.1980

### FINANCE/INSURANCE

**FAMILY INSURANCE CENTER**  
920.439.1777

**STATE BANK OF CHILTON**  
- STOCKBRIDGE OFFICE  
920.439.1414

### OUTDOOR RECREATION

**3 HOMIES FIREWORKS**  
920.263.1009

**LAKEVIEW RV PARK & CABINS**  
920.439.1495

**CALUMET COUNTY PARK**  
920.439.1008

**WINNEBAGO EASTSHORE CONSERVATION CLUB**  
920.439.1446

### ENERGY/UTILITIES

**ADVANCED FUEL SERVICES**  
920.439.1226

**STOCKBRIDGE BP GAS STATION**  
920.981.4015

### MUNICIPAL/GOVERNMENT

**STOCKBRIDGE FIRE DEPT/ FIRST RESPONDERS**  
920.439.1400

**STOCKBRIDGE POST OFFICE**  
920.439.1999

**VILLAGE & TOWN OF STOCKBRIDGE**  
920.439.1700 [www.villageofstockbridge.org](http://www.villageofstockbridge.org)  
920.418.5709 [www.townofstockbridge.org](http://www.townofstockbridge.org)

### CONSTRUCTION/ CONTRACTORS

**J & E CONSTRUCTION CO. INC.**  
920.439.1555

**KARLS MECHANICAL CONTRACTORS**  
920.849.2050

**MIKE'S ELECTRIC**  
920.849.9401

**PARSONS BROS. CONSTRUCTION**  
920.439-1914

**SCHROEDER CARPENTRY**  
920.841.7108

**W&L INSULATION**  
920.439.1802

### RESTAURANTS/TAVERNS

**BOWE'S BOULEVARD**  
920.439.1421

### FISHTAIL INN BAR & GRILL

920.439.1565

**GOBBLER'S KNOB SUPPER CLUB**  
920.439.1265

**HARBOR BAR & GRILL NEW MANAGEMENT**  
920.981.4039

**KAZZMO'S KITCHEN & SPIRITS**  
920.981.4028

**MUD CREEK COFFEE & CAFÉ**  
920.439.1096 STOCKBRIDGE  
920.439.1098 SHERWOOD

**NEIGHBORHOOD PUB & GRILL**  
920.849.3799

**SCHUMACHERS SHANTY**  
BAR, GRILL & BAIT SHOP  
920.439.1232

**ZIGG'S ICE CREAM & PIZZA**  
920.889.6597

### RETAIL/CONSUMER GOODS

**BRAVE GIRL BOUTIQUE**  
920.439.0977

**HERITAGE ORCHARD**  
920.849.2158

**RIPPEN-LIPS TACKLE COMPANY**  
414.801.4767

**SWEET SUMMERTIME ANTIQUES & MORE**  
SEASONAL  
920.213.1018

### PROFESSIONAL SERVICES

**C&R PUMPERS**  
920.849.7604

**CULLEN REAL ESTATE LLC STORAGE UNITS**  
920.645.9246

**EAST SHORE SALON**  
920.418.5619

**JIM HOOYMAN TEAM REALTY**  
920.203.9166

**LAKESHORE SEPTIC**  
920.439.1566

**STOCKBRIDGE STORAGE**  
920.439.1213



[WWW.STOCKBRIDGEBUSINESS.COM](http://WWW.STOCKBRIDGEBUSINESS.COM)



# Parks and Recreation

With our location on the eastern shore of Wisconsin's largest inland lake, we are a top destination for water recreation, boating, and fishing. Add some stunning geology courtesy of the Niagara Escarpment and you have picturesque views and awesome topography for silent sports. Inland wildlife areas are a nature lover's paradise. If you prefer your greenery more manicured, hit the links at one of our scenic and challenging golf courses. There is so much to explore and in Calumet County... Closer Than You Think!

## LAKE WINNEBAGO LAKESIDE PARKS

**High Cliff State Park** is a multi-level state park offering panoramic views of Lake Winnebago from the top of limestone cliffs. The park is located at the northwest corner of the county, in the Village of Sherwood. Enjoy wooded trails that lead to ideal resting spots complete with picture perfect views. If you're fortunate, you'll also discover Native American Effigy mounds which dot the upper level of the park. Take advantage of the High Cliff Marina and complete your day, climbing the observation tower and taking in the view only birds, and climbers like you, are privy to see!

**Calumet County Park** is a perfect spot for families with children who want to enjoy a lakeside picnic on the shores of Lake Winnebago. Let the children play and explore, and then stay for the night in a shore side campsite. To complete the family adventure, fish from the marina or bring your boat and cast away in front of your campsite!

## HARBORS

Launch permits are required at Calumet County Park Harbors. Purchase your daily and seasonal launch permits on-site, online, or at the Calumet County Parks Department Office. Calumet County Parks operates three harbors on Lake Winnebago including Brothertown Harbor, Calumet County Park Harbor and Stockbridge Harbor.

Boaters may stay on their boats overnight in Stockbridge Harbor only. The overnight docks are along the north bulkhead. No long term docking is available. Each unit must register and pay docking fees in advance at the self-registration station. Visit the Calumet County Parks website for more information on overnight docking at Stockbridge Harbor.

## LAKE WINNEBAGO BOAT LAUNCHES IN CALUMET COUNTY (FEES APPLY)

Brothertown Harbor  
Stockbridge Harbor  
Calumet County Park Harbor  
High Cliff Marina

## STURGEON SPEARING

The year starts frozen with a quiet stillness, but that changes in February, especially on Lake Winnebago. Sturgeon spearing season starts Saturday, February 10, and continues until Sunday, February 25, if the limit has not been met. A community of ice shanties scatter across the frozen lake as hopeful spearers partake in this annual tradition of trying to land one of these prehistoric, mammoth-sized fish. Even if you don't have a license to spear (licenses needed by Oct. 31), you can still get in the spirit. Stop by one of the registration stations for a first-hand glimpse of these monsters.



## STURGEON REGISTRATION STATIONS (open 7am-2pm)

Harrison Town Hall  
Stockbridge Harbor Boat Launch  
Calumet Harbor DNR Property

## BAIT SHOPS

### BLACKBURNS BAIT AND TACKLE

2314 State Avenue, New Holstein

### CALAWAY BAIT

N7059 Long Lake Road, Brillion  
(920)418-3048

### THE REEL SHOT

1919 E. Calumet Street, Appleton  
(920)750-6140, thereelshot.com

### RIPPN-LIPS TACKLE COMPANY

106 S. Military Road, Stockbridge  
(920)981-4023, rippn-lips.com

### SCHUMACHER'S SHANTY BAIT AND GUN

101 S. Military Road, Stockbridge  
(920)439-1232

## PARKS, WILDLIFE AREAS AND TRAILS



### ARIENS NORDIC CENTER

1111 Round Lake Road, Brillion  
(920) 756-5494 | Ariensnordic.com

See our ad on page 1.

This world class facility features a 20-point biathlon range, a 5k network of year-round trails for recreation, training and competitions for cross-country skiing, biathlon, roller-skiing, running, hiking, and more. The facility is open to the public and includes lighting, snowmaking, a paved roller-ski loop for off-season training, a pond for snowmaking purposes, and a 20-point biathlon range. Visit their website for more information on Ariens Nordic Center.



### BRILLION NATURE CENTER AND WILDLIFE AREA

W1135 Deer View Road, Brillion  
(920)756-3591 | billionnaturecenter.net

See our ad on page 35.

The Brillion Wildlife Area is one of three wildlife areas in Calumet County and the only with a nature

center. The natural marsh, pond and forest make it a birding paradise for bird watchers. Experience hands-on exhibits and explore 6.5 miles of trails! Go hiking, cross-country skiing and snowshoeing. Snowshoes are available to rent when the building is open. Classes and events offered throughout the year.



### BRILLION KAYAK LAUNCH

Located off of Glenview Avenue

Access Spring Creek in the City of Brillion. There is a small parking area adjacent to the launch. This access point is free to use.



### CALUMET COUNTY PARK

N6150 County Road EE  
Hilbert (north of Stockbridge)  
(920)439-1008, calumetcountyparks.org

Enjoy our lakeside campground and the views of Lake Winnebago. Experience five miles of hiking and mountain biking trails, Native American effigy mounds, and a boat launch. Enjoy sledding, tubing and cross-country skiing in winter.



### FOX RIVER STATE TRAIL

The Fox River State Trail connects Calumet County to Green Bay by trail! The Calumet County portion of the trail goes to Ott Road just north of Hilbert. The trail from Center Road to Ott Road is closed during the traditional nine-day gun deer season. The trailhead is located at N9099 Holmes Road in Forest Junction.



### FRIENDSHIP STATE TRAIL

The Friendship State Trail intersects with the Fox River State Trail in Forest Junction. The 4-mile Friendship State Trail follows State Highway 10 between Forest Junction and Brillion.



### HIGH CLIFF STATE PARK

N7630 State Park Rd., Sherwood  
(920)989-1106  
dnr.wi.gov/topic/parks/name/highcliff/

This popular state park is wooded with majestic cliff faces. It is located



# Parks and Recreation CONTINUED

along the shores of Lake Winnebago and offers 16 miles of trails. Go exploring, hiking, biking, horseback riding, cross-country skiing, camping, swimming, learn about Native American effigy mounds, take advantage of the park's marina, and climb a 40-foot observation tower.



## KIEL MARSH WILDLIFE AREA

[dnr.wi.gov/topic/lands/wildlifeareas/kiel.html](http://dnr.wi.gov/topic/lands/wildlifeareas/kiel.html)  
There are over 800 acres of the Kiel Marsh Wildlife Area that are located in the southeast part of Calumet County. The land is managed by the WDNR and is also a popular fishing and hunting area. Entrance into the area is free.



## KILLSNAKE WILDLIFE AREA

[dnr.wi.gov/topic/lands/wildlifeareas/killsnake.html](http://dnr.wi.gov/topic/lands/wildlifeareas/killsnake.html)

At the KILLSNAKE Wildlife Area, there are 7,000 acres of wildlife area that are home to many unique types of wildlife. In the wildlife area, three rivers come together to form the North Branch of the Manitowoc River. The wildlife area is popular for hunting and also features private agricultural farming, restored prairies, and forests.



## KIWANIS PARK AREA

1725 Silvermoon Lane  
New Holstein, (920)898-5766  
[cityofnewholstein.org](http://cityofnewholstein.org)

Over 60 acres and 2.5 miles of trails

are in the Kiwanis Park area. The park is located in the middle of New Holstein and offers several amenities including an outdoor aquatic center and fishing pond.



## LEDGE VIEW NATURE CENTER

W2348 Short Rd., Chilton  
(920)849-1471

[ledgeviewnaturecenter.org](http://ledgeviewnaturecenter.org)

Ledge View is best known for its guided cave tours throughout the spring and fall. Explore the animal exhibits, hiking trails, and the 60-foot observation tower! Cross-country skiing, and snowshoeing trails. Various programs and guided adventures are available year round.



## MENASHA CONSERVANCY

A 50-acre getaway in the midst of the urban area. Enjoy a short hiking trail, wetlands, and an abundance of birds.



## MIKE ARIENS - RUN FOR LIFE TRAIL

W910 Center Road, Brillion

<https://www.ariensco.com/Community/Conservation>

The Mike Ariens Trail winds through a 150-acre conservation project on AriensCo property. Open to the public, the 2.5 miles of gravel trails allow visitors to experience a variety of prairie, woodland, and wetland areas. The trail connects to the Wisconsin Department of Natural Resource's (WDNR) Friendship Trail, which connects to the Fox River State Trail. Parking available by the Ariens silo.



## SOLOMON TRAIL

A 2.25-mile, paved trail between Kiel and New Holstein along State Highway 32/57.

## GOLF & DISC GOLF BRAUN'S DEER RUN GOLF COURSE (9 holes & Mini Golf)

See our ad on pg. 7.

912 Fairway Drive, Brillion  
(920)875-0544

In addition to the challenging 9-hole course, have fun on the recently added mini golf course.

## HICKORY HILLS COUNTRY CLUB (18 holes)

W3095 Hickory Hills Road, Chilton  
(888)849-2912, [hhccgolf.com](http://hhccgolf.com)

## HIGH CLIFF GOLF AND EVENT CENTER (18 holes)

W5055 Golf Course Road, Sherwood  
(920)989-1045  
[highcliffgolfandeventcenter.com](http://highcliffgolfandeventcenter.com)

## CHILTON ELEMENTARY SCHOOL DISC GOLF (9 holes)

421 Court Street, Chilton

## FREITAG MEMORIAL PARK DISC GOLF (9 holes)

Near N8795 Church Street  
Brillion (in Forest Junction)  
[townofbrillion.com/freitag-memorial-park](http://townofbrillion.com/freitag-memorial-park)

## HORN PARK DISC GOLF (9 holes)

200 N. Parkway Drive, Brillion

## KIWANIS PARK DISC GOLF (9 holes)

1725 Silvermoon Lane, New Holstein

## ARCHERY AND SHOOTING RANGES ADVANCED ARCHERY

320 W. Main Street, Hilbert  
(920)853-3131

[advancedarcheryhilbert.com](http://advancedarcheryhilbert.com)

A 20-yard video archery range, adjustable 5-20 yard traditional range. Archery equipment, sales and service.

## THE REEL SHOT

1919 E. Calumet Street, Appleton  
(920)750-6140  
[thereelshot.com](http://thereelshot.com)

Archery range, bait, bow service, firearms, and firearms service, ammo, apparel, and hunting/fishing equipment.

## UNDERGROUND ARCHERY

910 W. Ryan Street, Brillion  
(920)756-5001

[facebook.com/undergroundarchery](https://facebook.com/undergroundarchery)


A full service bow shop with an underground range and video archery range.

## WOODFIRE

2687 Man Cal Road, Brillion  
(920)864-7070, [woodfirelodge.com](http://woodfirelodge.com)


Sporting clay courses, pheasant/chukar hunting, tower shoots, fully enclosed and heated 5 stand, 3D archery, and equipment sales and service.

High Cliff  
State Park

*Environmental Education and Outdoor Experiences for All*

Check out our upcoming programs and special events at  
[www.BrillionNatureCenter.net](http://www.BrillionNatureCenter.net)



- ✓ 6.5 miles of hiking/dog trails
- ✓ Prairie marsh and woodland habitats
- ✓ Geocache hidden on site
- ✓ Room rental available for meetings, workshops and parties

W1135 Deerview Road  
Brillion, WI  
(920) 756-3591



Please support these paid sponsors!

## AREA ATTRACTIONS

### ARIENSCO MUSEUM

109 Calumet St., Brillion  
(920)756-4455

See our ad, inside front cover

Eight decades of vintage equipment, photos, artifacts & memorabilia. Historic vignettes, life-sized Snow Globe, hands-on exhibits, STEM focused displays, & gift shop. Free.

### BRAUN'S DEER RUN GOLF COURSE

912 Fairway Dr., Brillion  
(920)875-0544

See our ad, pg. 7

Golf our beautiful 9-hole course with carts and NEW mini golf course. Restaurant open year round. Free sledding, ice-skating, cross country skiing & snowmobile trail to clubhouse.

### BRILLION NATURE CENTER

W1135 Deerview Rd, Brillion  
(920)756-3591

brillionnaturecenter.net

See our ad, pg. 35

Hike the trails through the woodland, marsh and prairie habitats. Participate in high quality educational, and recreational programs. Open year-round.

### HERITAGE ORCHARD

N2963 Lake Shore Dr., 5 miles south of Stockbridge, overlooking Lake Winnebago, (920)849-2158  
heritageorchardwi.com

Open daily Sept. - Oct. Sixteen varieties of apples & fall produce. Pick your own apples & pumpkins. Farm market. Hawthorn Hollow for group outings. Craft loft, caramel apples, apple cider donuts, fresh cider, school & bus tours.

### MULBERRY LANE FARM

W3190 County Rd. B, 3 mi. east of Sherwood  
(920)989-3130 | mulberrylanefarmwi.com

See our ad, pg. 5

Touch the wonders of Mulberry Lane Farm. The ultimate interactive farm experience. Guests have a chance to milk a cow, learn about farm animals, and take a hayride.

### NEW HOLSTEIN AQUATIC CENTER

1718 Madison St., New Holstein  
(920)898-1373, See our ad, pg. 5

Located in Kiwanis Park at the corner of Hickory Lane & Madison St. Experience 3 water slides, zero-depth/beach-entry, full concession stand & party room.

### THE ENGLER CENTER FOR THE PERFORMING ARTS

530 West Main St., Chilton  
(920)849-2880 | englercenter.com

Come enjoy live performing arts where the kids and community bring the stage to life! Purchase tickets online or call us today.

## EVENT VENUE

### ARIENS NORDIC CENTER & ROUND LAKE FARMS

1111 Round Lake Road, Brillion  
Trailhead (920) 756-5494, Events  
(920) 756-5484, ariensnordic.com

See our ads, pgs. 1 & back cover

5k of lighted trails for cross-country skiing & fat biking, 20-point Kurvinen Biathlon Target System, robust snowmaking system, 3.5k of paved trails for roller skiing, inline skating, running & walking.

Round Lake Farms premier event venue in northeast WI.

### CARSTENS MILL

114 W. Water St., Brillion  
(920)418-4844 | carstensmill.com

See our ad, pg. 25

Simple or Simply Elegant...more than just beautiful weddings! We are the perfect venue for your family reunion or holiday party as well.

### STONE PRAIRIE

W910 Center Road, Brillion  
stoneprairie.com

hospitality@ariensco.com

See our ad, back cover

Unique outdoor event site featuring all the amenities of an indoor venue. Located in the middle of a 150-acre conservation area. Corporate events, special occasions and weddings.

## FOOD, SPIRITS & COFFEE

### COBBLESTONE CREEK DINING & BANQUET

740 W. Ryan St. (Hwy. 10), Brillion  
(920)756-3214

cobblestonecrk.com, See our ad, pg. 12

Fine dining in a casual atmosphere. Featuring daily lunch & weekly dinner specials. Friday night seafood buffet & Saturday night prime rib. Private room for small gatherings along with banquet facility for up to 500 people.

### LACLARE CREAMERY

W2994 County HH, Malone  
(920)670-0051

See our ad, pg. 16

Creamery, visitor center, shoppe, & cafe. LaClare Creamery is a one-of-a-kind destination experience. Enjoy our cheese tasting experience every day.

### MUD CREEK

106 S. Military Rd. (Hwy. 55), Stockbridge (920)439-1096

W571 Castle Dr., Sherwood (920)439-1098 | mudcreekcoffee.com

See our ad, pg. 12

A HIP café in a rural location offering Colectivo coffee, a creative menu, and a warm ambience.

### ROEPKE'S VILLAGE INN

W2686 St. Charles Rd.  
off G, south of Chilton

(920) 849-4000, See our ad, pg. 12

Enjoy our hometown atmosphere. Check out our Friday night fish fries & the best steaks in Calumet County. Open 6 days a week.

### ROWLAND'S CALUMET BREWERY

24 N. Madison St., Chilton  
(920)849-2534, See our ad, pg. 21

Chilton's only microbrew pub. Eleven micro brews on tap, plus our own homemade root beer. Enjoy snacks, pizza & great conversation.

### SCOOPS ICE CREAM HOUSE

131 E. Chestnut St., Chilton  
(920)849-2520, See our ad, pg. 7

Stop in to satisfy your sweet tooth or caffeine craving. Over 24 flavors of our own Homemade Premium Ice Cream. Many varieties of cappuccino & coffee, & unique candies.

### TERRA VERDE

507 N. Madison, Chilton  
(920)849-9050 | (920)464-0367

See our ad, pg. 12

Bringing you the best coffeehouse experience with a wide selection of the finest organic coffee from around the world, teas, gourmet hot chocolate, smoothies, panini sandwiches & more.

### ZIEGLER WINERY

W3953 Winnebago Heights Drive, Malone  
Malone

(920)670-0034 | zieglervinery.com

See our ad, pg. 11

Rustic Charm with a modern flair, we offer 24 wines, a large tasting room, two upper mezzanines, a wine walk, and two patios. Wine tastings available during all normal hours.

## LODGING

### LAKEVIEW RV PARK & CABINS

N4475 Ledge Rd, Chilton  
(920)439-1495

lakeviewrvparkandcabins.com

See our ad, pg. 37

On the eastern side of Lake Winnebago, campground has 52 acres, in-ground pool, 3 playgrounds, arcade, restaurant & bar, spacious group sites, book early.

### ROSEMARY PARSONAGE

117 W. Water St., Brillion  
airbnb.com/h/rosemary.parsonage

See our ad, pg. 25

A place to reflect and rejuvenate.

### THE YELLOW HOUSE

234 S. Main Street, Brillion  
airbnb.com, See our ad, pg. 25

Accommodates 17 people comfortably with 6 bedrooms, full kitchen, and large gathering area with a fireplace.

## MUNICIPAL CITY OF BRILLION/CHAMBER OF COMMERCE

Brillion City Hall | 201 N. Main St.  
(920)756-2250

ci.brillion.wi.us, See our ad, pg. 1

Brillion is a great place to live, work, learn & play together. Various shopping & dining opportunities, museums, golf course, parks, library, community center, nature areas & a performing arts center.

### CHILTON CHAMBER OF COMMERCE

(920)849-2451 | (920)418-1650  
chilton.govoffice.com

See our ad, pg. 31

Chilton is the county seat of Calumet County & home of Ledge View Nature Center, Wisconsin Micro-Brewers Beer Fest & the Calumet County Fairgrounds. Shopping & dining experiences await your arrival.

### NEW HOLSTEIN CHAMBER OF COMMERCE

2110 Washington St., New Holstein  
(920)898-5766 | newholstein.org

See our ads, pgs. 5 & 31

Located in the southern part of Calumet County & founded in 1848. Offers a variety of shopping & dining experiences. Industrial building sites are available. Visit the historic Timm House Museum.

### VILLAGE OF HARRISON

(920)989-1062 | harrison-wi.org  
development@harrison-wi.org

See our ad, pg. 29

Harrison is a great place to grow your business, live in our quiet neighborhoods, or play on the northern tip of Lake Winnebago.

## SHOPPING

### ARIENSCO MUSEUM STORE

109 Calumet St., Brillion  
(920)756-4455

See our ad, pg. 15

Gifts, books, casual clothing, caps, and gear focused on Museum themes. Historic graphics from company archives. Children's books, toys, and games featuring engineering, nature, weather topics. Wisconsin-themed merchandise. Open 8-4:30 M-F.

### BRAVE GIRL BOUTIQUE

106 S Military Rd, Stockbridge  
(920)439-0977

bravegirlboutique.com

See our ad, pg. 13

Unique, inclusive, on-trend women's clothing with a nice selection of gift items, great accessories & shoes.

### HENNING'S CHEESE

20201 Point Creek Road, Kiel  
(920)894-3032

henningscheese.com

See our ad, pg. 14

Watch cheese being made M - F mornings and fresh curds M - F. Cheese samples, wine, ice cream, and souvenirs. View early cheese making equipment in our small museum.

### HIDDEN TREASURES THRIFT SHOPPE

361 S. Main Street, Brillion  
(920)524-2000, See our ad, pg. 17

If you like thrifting, then Hidden Treasures Thrift Shoppe in Brillion is THE place to go! This attractive and organized non-profit shop is full of great values and selection!

### STOCKBRIDGE AREA BUSINESS ASSOCIATION

P.O. Box 380, Stockbridge  
StockbridgeBusiness.com

See our ad, pg. 31

The Stockbridge Area Business Assoc. is a group of business owners who provide support for new businesses in the area & networking amongst current businesses.

### VERN'S CHEESE

312 W. Main St., Chilton  
(920)849-7717 | vernscheese.com

See our ad, pg. 17

Serving Wisconsin & surrounding states. Visit our specialty store of cheeses, candies, Wisconsin souvenirs & more.

### WOLDT'S FARM STORE

N9594 County Rd PP, Brillion  
(920)-864-7737

woldtfarms.com/farm-store

See our ad, pg. 14

Home grown beef, pork, cheeses, and other local products including soaps, syrups, spirits, ice cream and more!



Deluxe  
Camping  
Cabins

Cabin 8 stacked  
queen beds!

Book  
Early  
for  
2024

Cabin 5 Cabin 6  
shared firepit!

Cabin 9  
Cabin 10



Reservations 920-439-1495 | LakeviewRVParkandCabins.com



Pub/Restaurant | Mini Golf | Frisbee | Arcade  
In-Ground Heated Pool | Seasonal Sites | Cabins  
Spacious Group Sites | New Drive Thru Sites in 2024

Download our Free APP for 2024 Activities



N4475 Ledge Road  
Chilton, WI 53014

Oasis Bar and Grill open Wed. thru Sat.

Find us on f



# experience the unexpected

CORPORATE EVENTS / SPECIAL OCCASIONS / WEDDINGS / MORE



ROUND LAKE FARMS  
BRILLION, WISCONSIN

Situated on Round Lake and 250 acres of rolling hills at Ariens Nordic Center, this premier event venue is the one-of-a-kind setting for your celebration. For inquiries, visit [RoundLakeFarms.com](http://RoundLakeFarms.com).



## STONE PRAIRIE

A breathtaking 80-acre conservation preserve is the charming backdrop to your memorable occasion. For inquiries, visit [StonePrairie.com](http://StonePrairie.com).



Check out community events for all venues at [ariensnordic.com/events](http://ariensnordic.com/events)